

DWG. NO.	DWG. TITLE
	<u>SEGMENT L - MARITIMES DELIVERY LINE</u>
PAGE 1	QUAD SHEET
	<u>SEGMENT N - LYNNFIELD LATERAL</u>
PAGE 1	QUAD SHEET
PAGE 2	QUAD SHEET
PAGE 3	QUAD SHEET
PAGE 4	QUAD SHEET
	<u>SEGMENT O - PEABODY LATERAL</u>
PAGE 1	QUAD SHEET

DWG. NO.	DWG. TITLE
	<u>SEGMENT P - HAVERHILL LATERAL</u>
PAGE 1	QUAD SHEET
PAGE 2	QUAD SHEET
PAGE 3	QUAD SHEET
	<u>SEGMENT Q - FITCHBURG LATERAL EXTENSION</u>
PAGE 1	QUAD SHEET
PAGE 2	QUAD SHEET
PAGE 3	QUAD SHEET
PAGE 4	QUAD SHEET
PAGE 5	QUAD SHEET
PAGE 6	WAREYARD QUAD SHEET
	<u>SEGMENT S - 300 LINE CT LOOP</u>
PAGE 1	QUAD SHEET
PAGE 2	QUAD SHEET
PAGE 3	QUAD SHEET
PAGE 4	QUAD SHEET
PAGE 5	QUAD SHEET

TENNESSEE GAS PIPELINE COMPANY, L.L.C.
NORTHEAST ENERGY DIRECT PROJECT
MARKET PATH COMPONENT
LATERALS & LOOP LINES

COVER SHEET



Tennessee Gas Pipeline
Company, L.L.C.
a Kinder Morgan company



Hatch Mott
MacDonald

150 Lower Westfield Rd.
Holyoke, MA 01040
Ph: (413) 535-0135 Fax: (413) 535-0136

DRAWN BY: HMM 03/13/2015

CHECKED BY: HMM

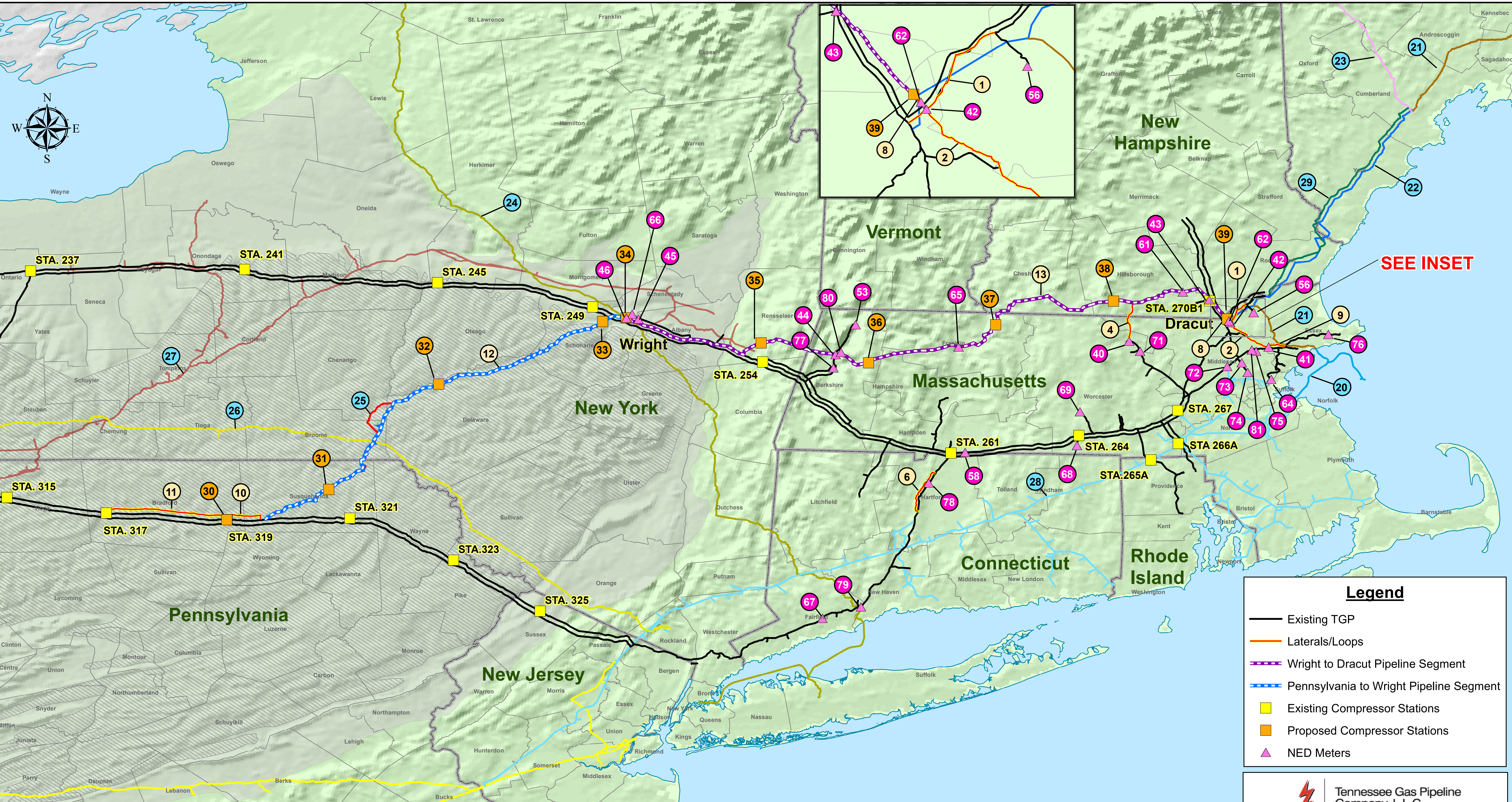
APPROVED BY: HMM

REV. DATE: 11/2015

REVISION: 2

DESC: ISSUED FOR FERC

PAGE: COVER SHEET



SEE INSET

Legend

- Existing TGP
- Laterals/Loops
- Wright to Dracut Pipeline Segment
- Pennsylvania to Wright Pipeline Segment
- Existing Compressor Stations
- Proposed Compressor Stations
- NED Meters

Tennessee Gas Pipeline Company, L.L.C.
a Kinder Morgan company

Northeast Energy Direct (NED) Project Location Map

Created By: BWR
Date: 10/12/2015
Oct_2015_FINAL_FERC_Filing

NOTICE: KINDER MORGAN, INC. PRIVILEGED OR CONFIDENTIAL INFORMATION. PLEASE FIND KINDER MORGAN GIS DATA SPECIFIC TO THIS PROJECT A NEW DATA REQUEST WILL NEED TO BE MADE FOR ANY FUTURE OR SUBSEQUENT PROJECTS. THIS DATA IS INTENDED SOLELY FOR INTERNAL USE BY YOUR BUSINESS FOR THAT PURPOSE. YOU MAY NOT DISCLOSE, PUBLISH, SELL, ASSIGN OR TRANSFER THIS DATA TO ANY OTHER PARTY. ALTHOUGH EFFORTS HAVE BEEN MADE TO ENSURE THAT THE DATA IS CORRECT AND RELIABLE, ERRORS ARE POSSIBLE. KINDER MORGAN DOES NOT GUARANTEE OR WARRANT THE ACCURACY OR QUALITY OF THIS DATA. THIS DATA SHOULD NOT BE USED FOR EXCAVATION OR CONSTRUCTION PURPOSES. YOU ARE REQUIRED UNDER APPLICABLE STATE LAWS TO ACTIVATE THE ONE CALL PROCESS TO FACILITATE ANY LINE LOCATING REQUIREMENTS.

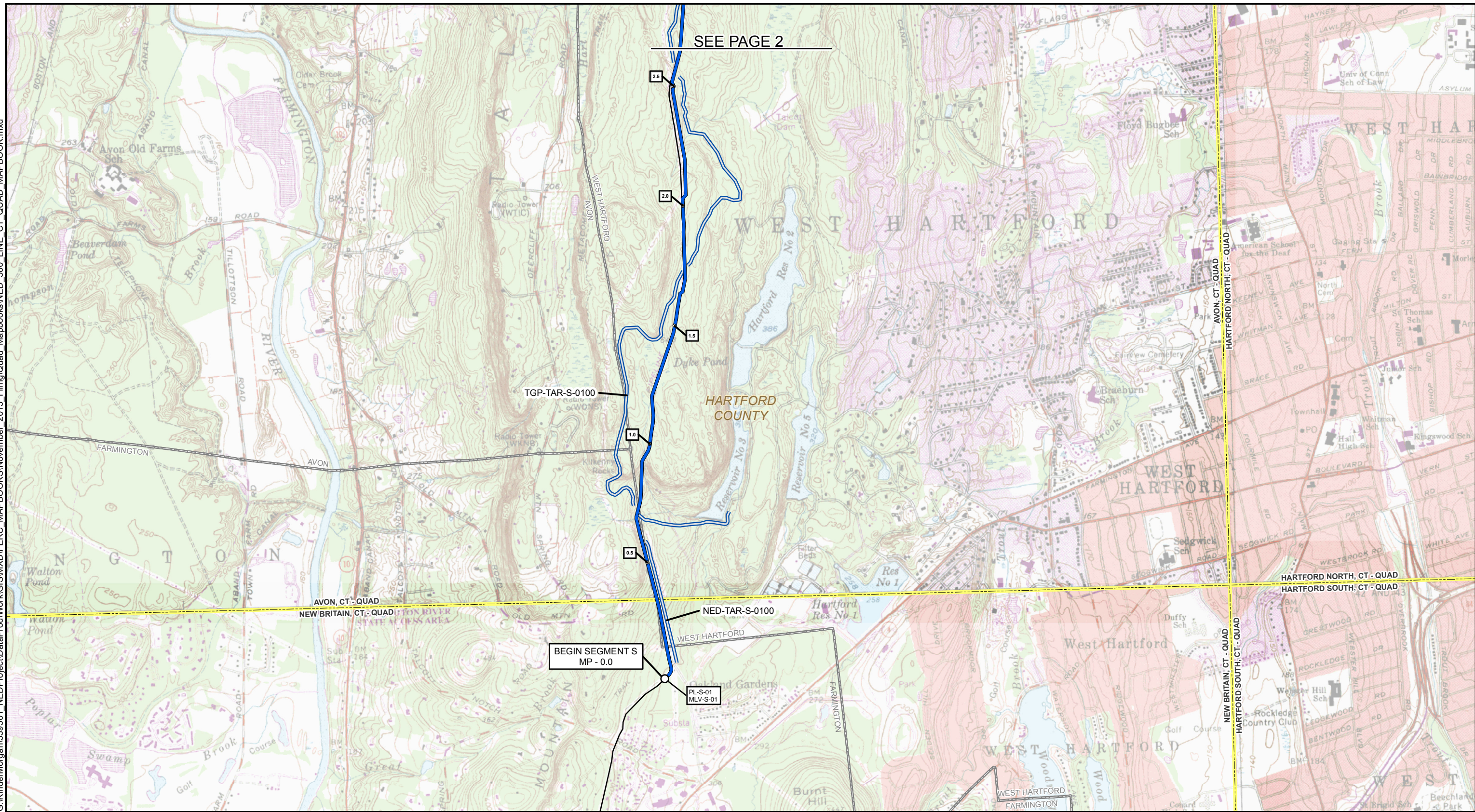
NED Pipeline	MAOP	MOP	State	Dia	Length (mi)
1 Haverhill Lateral	800	750	MA/NH	20"	9.27
2 Lynnfield Lateral	1460	1460	MA	24"	14.28
4 Fitchburg Lateral Extension	1460	1460	MA/NH	12"	13.97
6 300 Line CT Loop	800	719	CT	24"	14.80
8 Maritimes Delivery Line	1460	1460	MA	30"	0.75
9 Peabody Lateral	1460	730	MA	24"	5.32
10 Loop 319-3	1170	1170	PA	36"	9.96
11 Loop 317-3	1170	1170	PA	36"	30.98
12 Pennsylvania to Wright Pipeline Segment	1460*	1460*	PA/NY	30"	132.55
13 Wright to Dracut Pipeline Segment	1460	1460	NY/MA/NH	30"	187.78

*MAOP/MOP between Supply Path Tail Station & Market Path Head Station is 1600
*MOP upstream of Supply Path Head Station is 1170

Pipelines
20 Hub Line
21 M&NP
22 M&NP & PNGTS Joint Facilities
23 PNGTS
24 Iroquois
25 Constitution
26 Millennium
27 Dominion
28 Algonquin
29 Granite State Gas Transmission

Metering & Regulation
40 Fitchburg Lateral Check
41 200-1 Check
42 Haverhill Check
43 200-2 Check
44 North Adams Check
45 NED/200 Line Bi-Directional OPP & Check
46 IGT-Constitution Bi-Directional Meter
53 North Adams Custody (20103)
56 Lawrence (20121)
58 Longmeadow
61 Merrimack
62 Maritimes
64 Everett
65 West Greenfield
66 NED Check
67 Easton (20853)
68 Southbridge (20108)
69 Spencer (20191)
71 Lunenburg (20949)
72 Lexington (20192)
73 Burlington (20341)
74 Arlington (20115)
75 Reading (20136)
76 Essex (20323)
77 Pittsfield (20102)
78 North Bloomfield (20453)
79 Milford (20425)
80 North Adams Regulator
81 Wilmington Regulator

Compressor Stations	Capacity (HP)
30 Station 319 Modifications	52,500 HP
31 Supply Path Head Station	52,500 HP
32 Supply Path Mid Station	50,500 HP
33 Supply Path Tail Station	50,500 HP
34 Market Path Head Station	20,600 HP
35 Market Path Mid Station 1	41,000 HP
36 Market Path Mid Station 2	41,000 HP
37 Market Path Mid Station 3	41,000 HP
38 Market Path Mid Station 4	41,000 HP
39 Market Path Tail Station	23,000 HP



SEE PAGE 2

- 1 MILE POST
- PROPOSED NORTHEAST ENERGY DIRECT 300 LINE CONNECTICUT LOOP - SEGMENT S CENTERLINE
- PROPOSED ACCESS ROAD*
NED: Proposed Access Road
TGP: Previously Used TGP Access Road
- EXISTING TGP PIPELINE
- PROPOSED CONTRACTOR NED: Proposed Contractor Yard
- MUNICIPAL BOUNDARY
- USGS QUADRANGLE BOUNDARY

*Temporary Access Roads are depicted to the edge of the temporary workspace which is not shown. When an access road meets up with a public right of way, it begins at the public road's easement.

MAP COMPILED USING THE MOST CURRENT QUADRANGLE MAP AVAILABLE FROM THE U.S. GEOLOGICAL SURVEY (USGS).

TENNESSEE GAS PIPELINE COMPANY, L.L.C.

NORTHEAST ENERGY DIRECT PROJECT

300 LINE CONNECTICUT LOOP QUAD MAPBOOK

SEGMENT S

HARTFORD COUNTY
CONNECTICUT



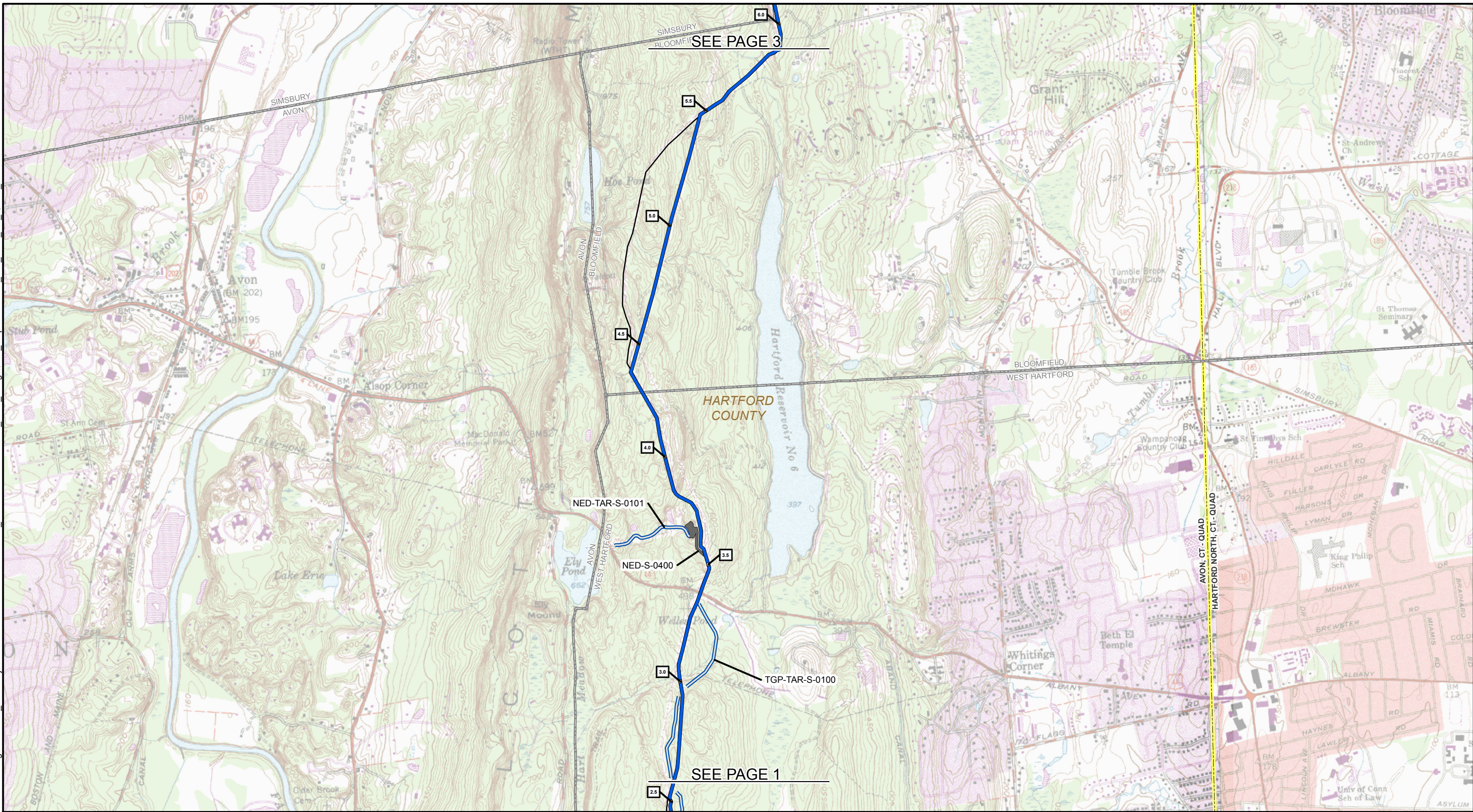
ABSOLUTE SCALE:
1:24,000

REFERENCE SCALE:
1 IN = 2,000 FEET

Tennessee Gas Pipeline Company, L.L.C.
a Kinder Morgan company

Hatch Mott MacDonald
150 Lower Westfield Rd.
Holyoke, MA 01040
Ph: (413) 535-0135 Fax: (413) 535-0136

DRAWN BY:	HMM 03/13/2015
CHECKED BY:	HMM
APPROVED BY:	HMM
REV. DATE:	11/2015
REVISION:	2
DESC:	ISSUED FOR FERC
PAGE:	1 OF 5



	MILE POST		PROPOSED CONTRACTOR NED: Proposed Contractor Yard
	PROPOSED NORTHEAST ENERGY DIRECT 300 LINE CONNECTICUT LOOP - SEGMENT S CENTERLINE		MUNICIPAL BOUNDARY
	PROPOSED ACCESS ROAD*		USGS QUADRANGLE BOUNDARY
	NED: Proposed Access Road		
	TGP: Previously Used TGP Access Road		
	EXISTING TGP PIPELINE		

*Temporary Access Roads are depicted to the edge of the temporary workspace which is not shown. When an access road meets up with a public right of way, it begins at the public road's easement.

MAP COMPILED USING THE MOST CURRENT QUADRANGLE MAP AVAILABLE FROM THE U.S. GEOLOGICAL SURVEY (USGS).

TENNESSEE GAS PIPELINE COMPANY, L.L.C.
NORTHEAST ENERGY DIRECT PROJECT
300 LINE CONNECTICUT LOOP QUAD MAPBOOK
SEGMENT S
 HARTFORD COUNTY
 CONNECTICUT

2,000 1,000 0 2,000 4,000 FEET

N
W E
S

ABSOLUTE SCALE:
1:24,000

REFERENCE SCALE:
1 IN = 2,000 FEET

Tennessee Gas Pipeline Company, L.L.C.
a Kinder Morgan company

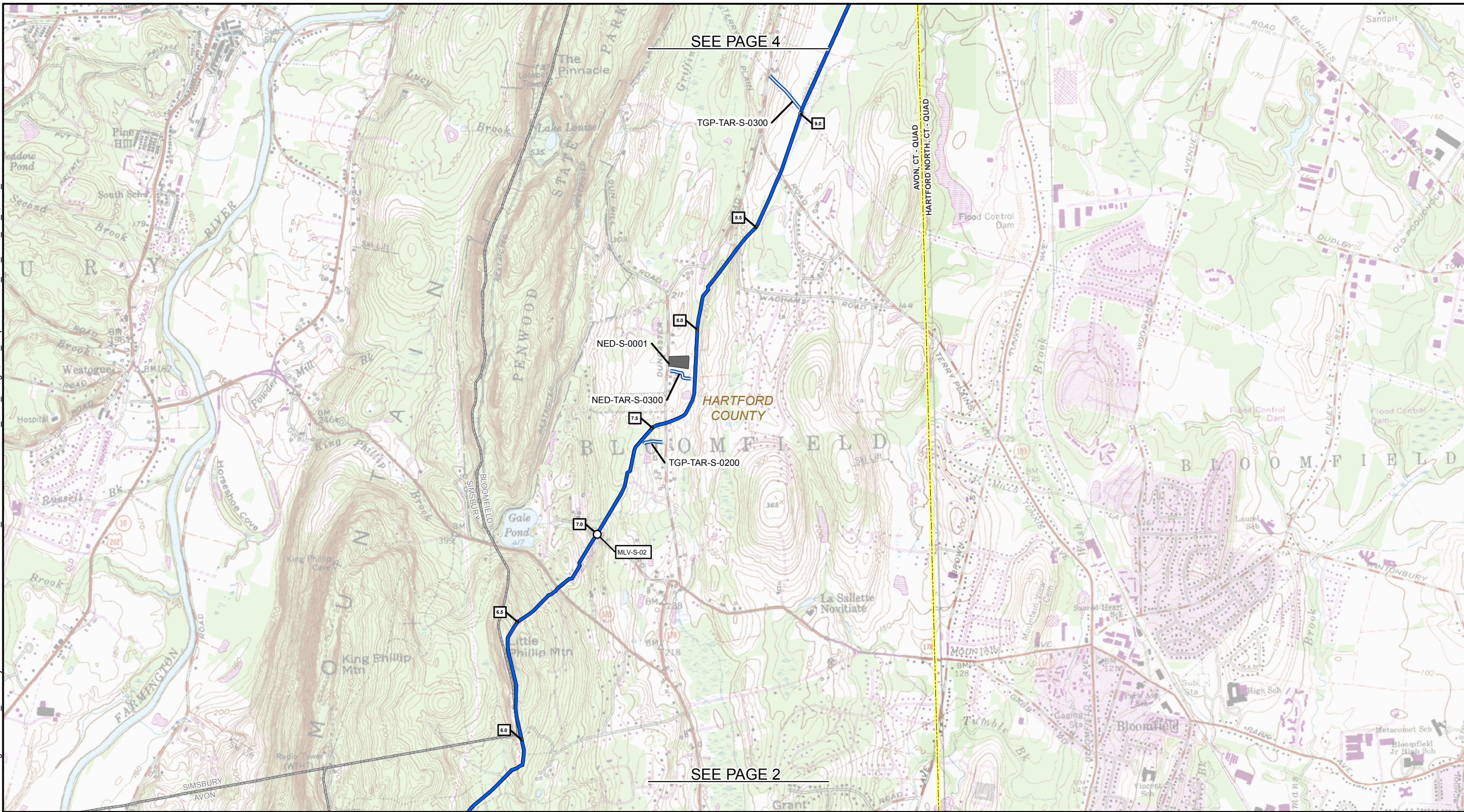
Hatch Mott MacDonald

150 Lower Westfield Rd.
Holyoke, MA 01040
Ph: (413) 535-0135 Fax: (413) 535-0136

DRAWN BY:	HMM 03/13/2015
CHECKED BY:	HMM
APPROVED BY:	HMM
REV. DATE:	11/2015
REVISION:	2
DESC:	ISSUED FOR FERC
PAGE:	2 OF 5

G:\KinderMorgan\339501_NED\ProjectData\Prod\Work\GIS\MXD\FERC_MAPBOOKS\November_2015_Filing\Quad_Mapbooks\NED_300_LINE_CT_QUAD_MAPBOOK.mxd

10272015-1117-AMS-000



SEE PAGE 4

SEE PAGE 2

- 1 MILE POST
- PROPOSED NORTHEAST ENERGY DIRECT 300 LINE CONNECTICUT LOOP - SEGMENT S CENTERLINE
- PROPOSED ACCESS ROAD*
NED: Proposed Access Road
TGP: Previously Used TGP Access Road
- EXISTING TGP PIPELINE
- PROPOSED CONTRACTOR YARD
NED: Proposed Contractor Yard
- MUNICIPAL BOUNDARY
- USGS QUADRANGLE BOUNDARY

*Temporary Access Roads are depicted to the edge of the temporary workspace which is not shown. When an access road meets up with a public right of way, it begins at the public road's easement.

MAP COMPILED USING THE MOST CURRENT QUADRANGLE MAP AVAILABLE FROM THE U.S. GEOLOGICAL SURVEY (USGS).

TENNESSEE GAS PIPELINE COMPANY, L.L.C. NORTHEAST ENERGY DIRECT PROJECT 300 LINE CONNECTICUT LOOP QUAD MAPBOOK SEGMENT S

HARTFORD COUNTY
CONNECTICUT



ABSOLUTE SCALE:
1:24,000

REFERENCE SCALE:
1 IN = 2,000 FEET

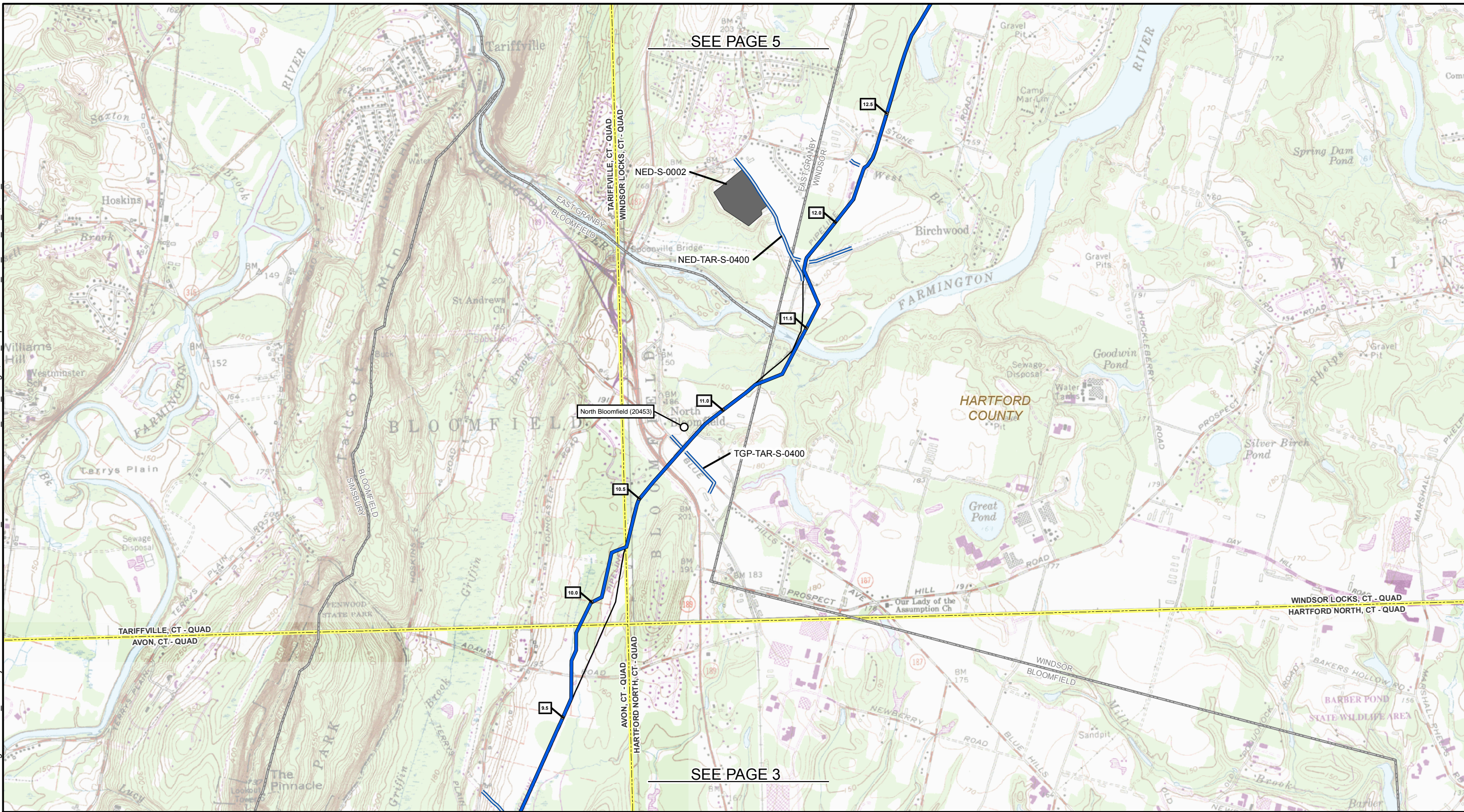


150 Lower Westfield Rd.
Holyoke, MA 01040
Ph: (413) 535-0135 Fax: (413) 535-0136

DRAWN BY:	HMM 03/13/2015
CHECKED BY:	HMM
APPROVED BY:	HMM
REV. DATE:	11/2015
REVISION:	2
DESC:	ISSUED FOR FERC
PAGE:	3 OF 5

G:\KinderMorgan\339501_NED\ProjectData\Prod\Work\GIS\MXD\FERC_MAPBOOKS\November_2015_Filing\Quad_Mapbooks\NED_300_LINE_CT_QUAD_MAPBOOK.mxd

10/27/2015-1117-AMS-000



SEE PAGE 5

SEE PAGE 3

- 1 MILE POST
- PROPOSED NORTHEAST ENERGY DIRECT 300 LINE CONNECTICUT LOOP - SEGMENT S CENTERLINE
- PROPOSED ACCESS ROAD*
NED: Proposed Access Road
TGP: Previously Used TGP Access Road
- EXISTING TGP PIPELINE
- PROPOSED CONTRACTOR NED: Proposed Contractor Yard
- MUNICIPAL BOUNDARY
- USGS QUADRANGLE BOUNDARY

*Temporary Access Roads are depicted to the edge of the temporary workspace which is not shown. When an access road meets up with a public right of way, it begins at the public road's easement.

MAP COMPILED USING THE MOST CURRENT QUADRANGLE MAP AVAILABLE FROM THE U.S. GEOLOGICAL SURVEY (USGS).

TENNESSEE GAS PIPELINE COMPANY, L.L.C. NORTHEAST ENERGY DIRECT PROJECT 300 LINE CONNECTICUT LOOP QUAD MAPBOOK SEGMENT S

HARTFORD COUNTY
CONNECTICUT

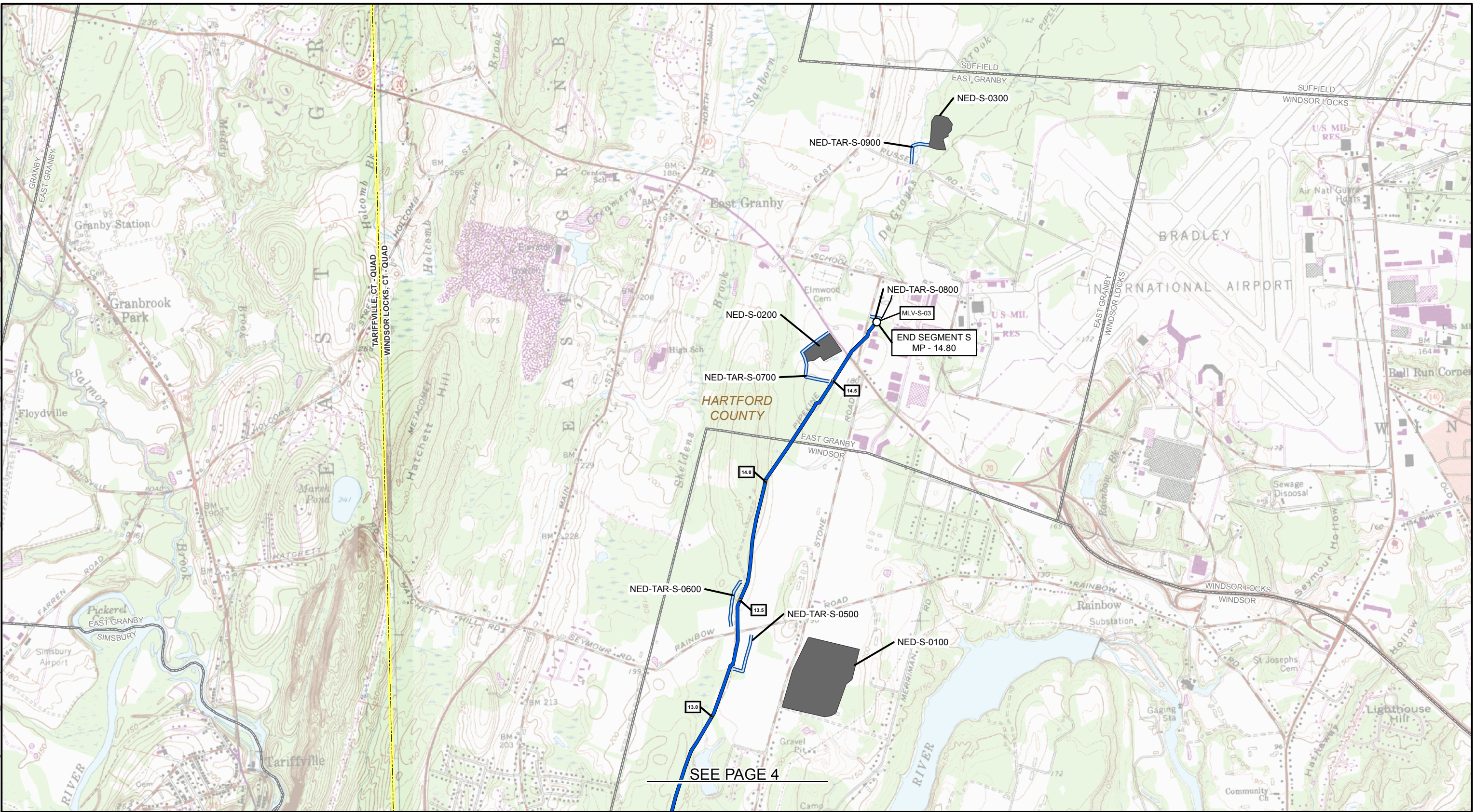


ABSOLUTE SCALE:
1:24,000

REFERENCE SCALE:
1 IN = 2,000 FEET



DRAWN BY:	HMM 03/13/2015
CHECKED BY:	HMM
APPROVED BY:	HMM
REV. DATE:	11/2015
REVISION:	2
DESC:	ISSUED FOR FERC
PAGE:	4 OF 5



SEE PAGE 4

1 MILE POST	PROPOSED CONTRACTOR NED: Proposed Contractor Yard
PROPOSED NORTHEAST ENERGY DIRECT 300 LINE CONNECTICUT LOOP - SEGMENT S CENTERLINE	MUNICIPAL BOUNDARY
PROPOSED ACCESS ROAD* NED: Proposed Access Road TGP: Previously Used TGP Access Road	USGS QUADRANGLE BOUNDARY
EXISTING TGP PIPELINE	

*Temporary Access Roads are depicted to the edge of the temporary workspace which is not shown. When an access road meets up with a public right of way, it begins at the public road's easement.

MAP COMPILED USING THE MOST CURRENT QUADRANGLE MAP AVAILABLE FROM THE U.S. GEOLOGICAL SURVEY (USGS).

TENNESSEE GAS PIPELINE COMPANY, L.L.C.
NORTHEAST ENERGY DIRECT PROJECT
300 LINE CONNECTICUT LOOP QUAD MAPBOOK
SEGMENT S
 HARTFORD COUNTY
 CONNECTICUT

2,000 1,000 0 2,000 4,000 FEET

N
W E
S

ABSOLUTE SCALE:
1:24,000

REFERENCE SCALE:
1 IN = 2,000 FEET

Tennessee Gas Pipeline Company, L.L.C.
a Kinder Morgan company

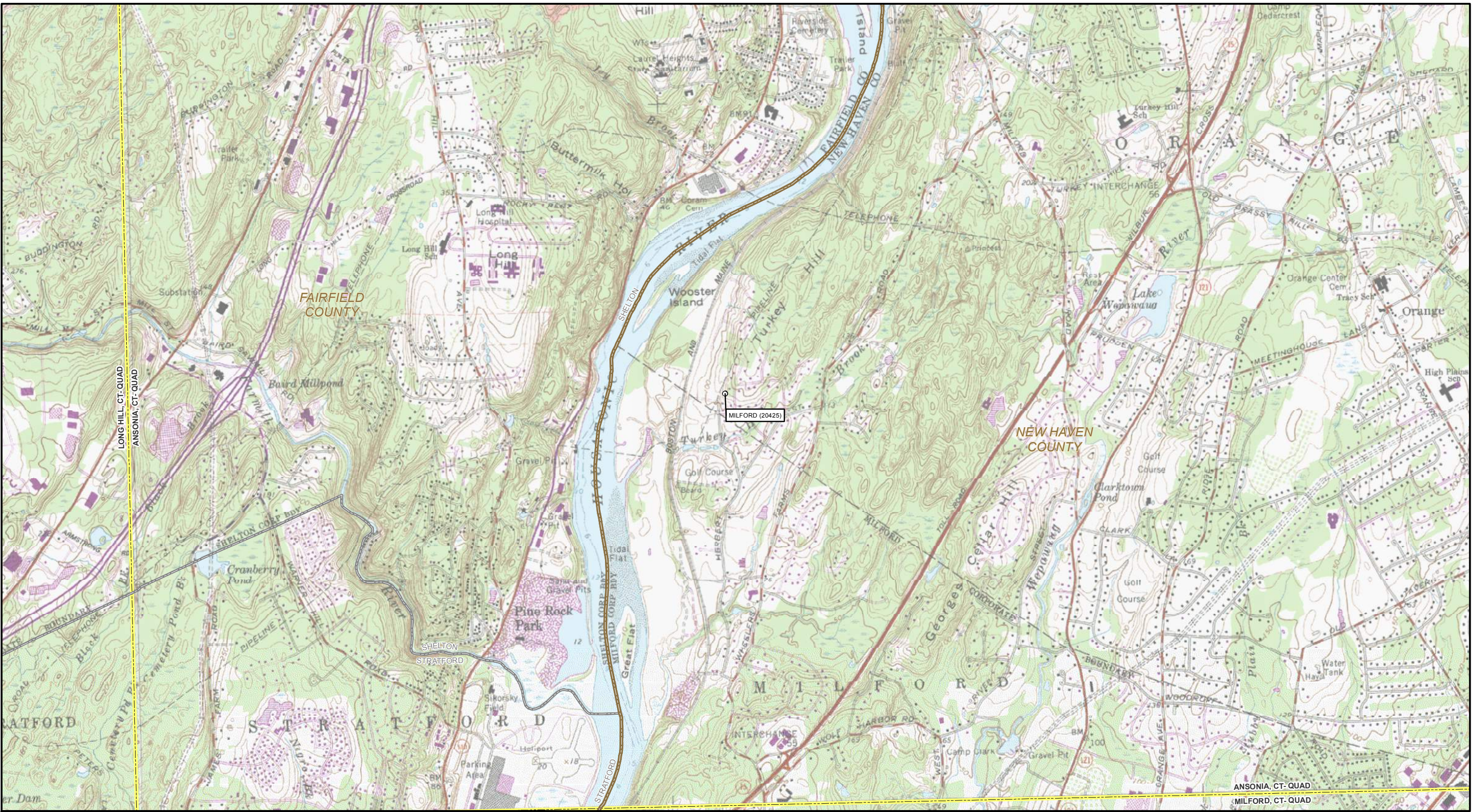
Hatch Mott MacDonald

150 Lower Westfield Rd.
Holyoke, MA 01040
Ph: (413) 535-0135 Fax: (413) 535-0136

DRAWN BY:	HMM 03/13/2015
CHECKED BY:	HMM
APPROVED BY:	HMM
REV. DATE:	11/2015
REVISION:	2
DESC:	ISSUED FOR FERC
PAGE:	5 OF 5

G:\KinderMorgan\339601_NED\ProjectData\Prod\Work\GIS\MXD\FERC_MAPBOOKS\November_2015_Filing\Quad_Mapbooks\NED_ABOVEGROUND_FACILITIES_OUTSIDE_INDEX_QUAD_MAPBOOK.mxd

11/18/2015-1117-AMS-000

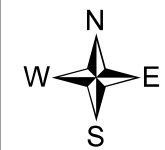


- PROPOSED METER SITE
- EXISTING TGP PIPELINE
- ▭ MUNICIPAL BOUNDARY
- ▭ COUNTY BOUNDARY
- ▭ STATE BOUNDARY
- ▭ USGS QUADRANGLE BOUNDARY

MAP COMPILED USING THE MOST CURRENT QUADRANGLE MAP AVAILABLE FROM THE U.S. GEOLOGICAL SURVEY (USGS).

TENNESSEE GAS PIPELINE COMPANY, L.L.C. NORTHEAST ENERGY DIRECT PROJECT METER SITE QUAD MAPBOOK MILFORD (20425)

FAIRFIELD COUNTY
CONNECTICUT



ABSOLUTE SCALE:
1:24,000

REFERENCE SCALE:
1 IN = 2,000 FEET



150 Lower Westfield Rd.
Holyoke, MA 01040
Ph: (413) 535-0135 Fax: (413) 535-0136

DRAWN BY: HMM 11/18/2015

CHECKED BY: HMM

APPROVED BY: HMM

REV. DATE: 11/2015

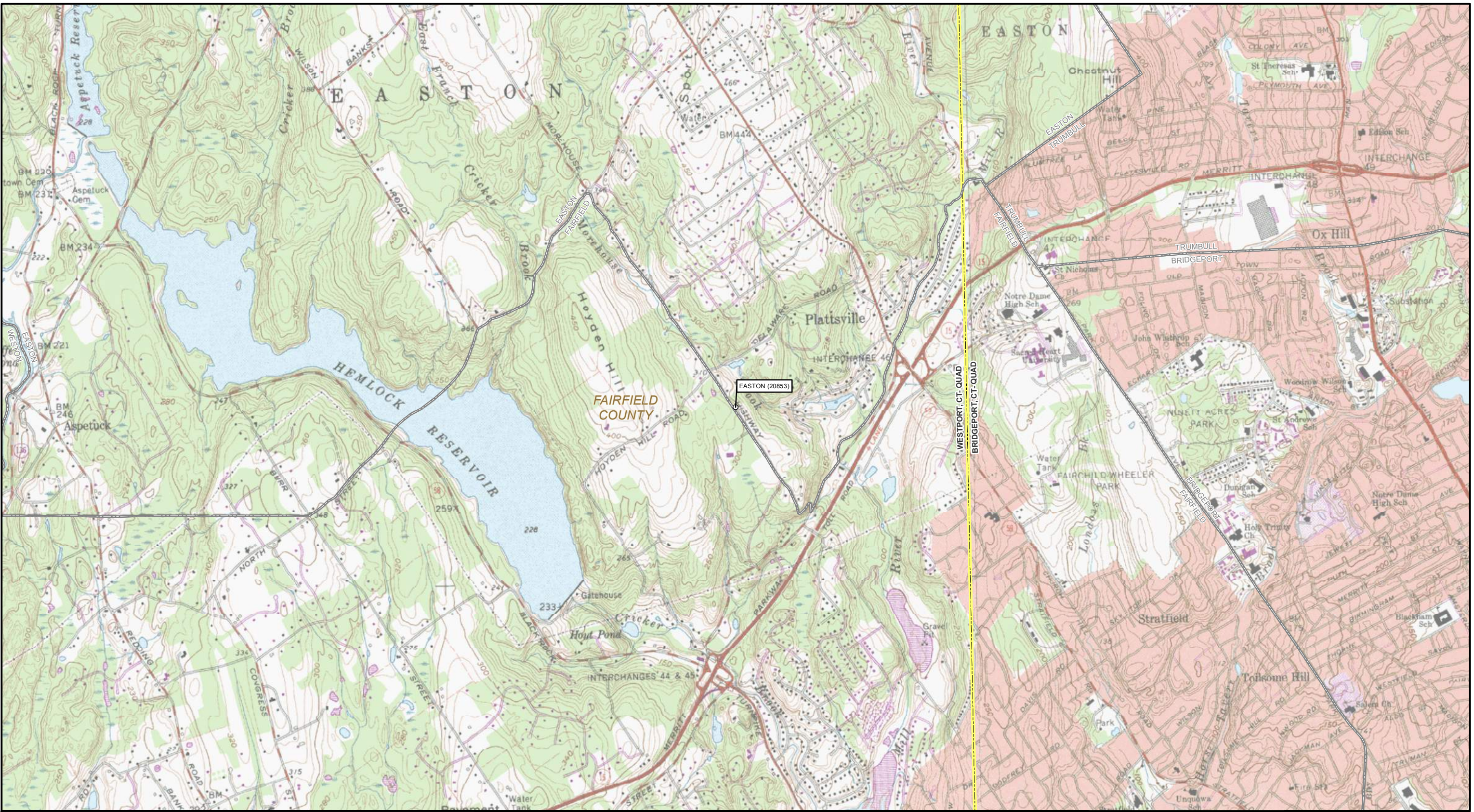
REVISION: 0

DESC: ISSUED FOR FERC

PAGE: 1 OF 14

G:\KinderMorgan\339501_NED\ProjectData\Prod\Work\GIS\MXD\FERC_MAPBOOKS\November_2015_Filing\Quad_Mapbooks\NED_ABOVEGROUND_FACILITIES_OUTSIDE_INDEX_QUAD_MAPBOOK.mxd

11/18/2015-1117-AMS-000



- PROPOSED METER SITE
- EXISTING TGP PIPELINE
- ▭ MUNICIPAL BOUNDARY
- ▭ COUNTY BOUNDARY
- ▭ STATE BOUNDARY
- ▭ USGS QUADRANGLE BOUNDARY

MAP COMPILED USING THE MOST CURRENT QUADRANGLE MAP AVAILABLE FROM THE U.S. GEOLOGICAL SURVEY (USGS).

TENNESSEE GAS PIPELINE COMPANY, L.L.C.
NORTHEAST ENERGY DIRECT PROJECT
METER SITE QUAD MAPBOOK
EASTON (20853)

FAIRFIELD COUNTY
CONNECTICUT



ABSOLUTE SCALE:
1:24,000

REFERENCE SCALE:
1 IN = 2,000 FEET



150 Lower Westfield Rd.
Holyoke, MA 01040
Ph: (413) 535-0135 Fax: (413) 535-0136

DRAWN BY: HMM 11/18/2015

CHECKED BY: HMM

APPROVED BY: HMM

REV. DATE: 11/2015

REVISION: 0

DESC: ISSUED FOR FERC

PAGE: 13 OF 14