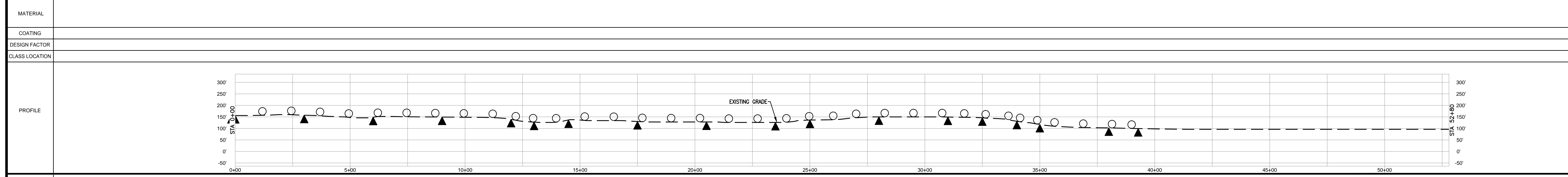
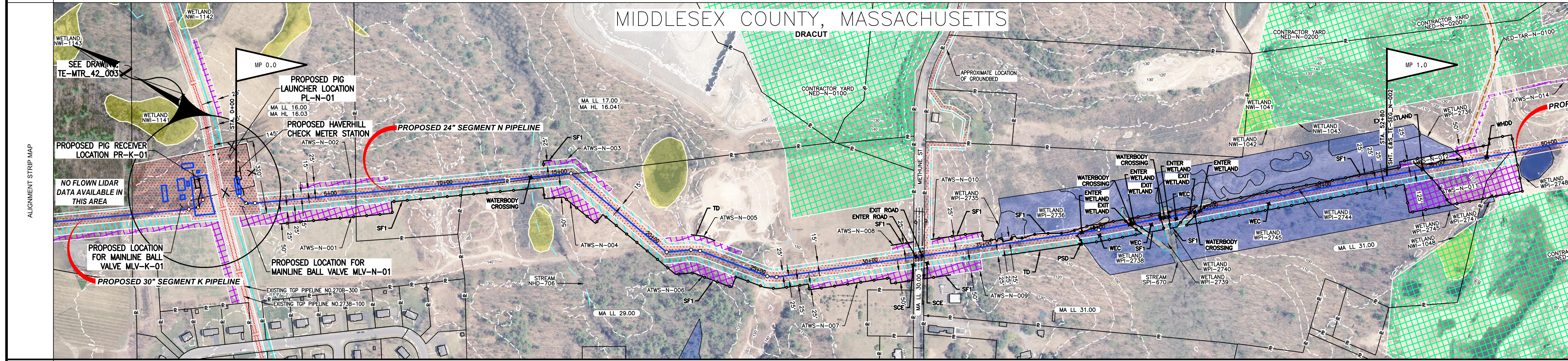


PROTECTION EASEMENT	
LINE LIST	<div style="display: flex; justify-content: space-between;"> <div style="border: 1px solid black; border-radius: 50%; padding: 2px;">MA LL 16.00 MA HL 16.03</div> <div style="border: 1px solid black; border-radius: 50%; padding: 2px;">MA LL 17.00 MA HL 16.041</div> <div style="border: 1px solid black; border-radius: 50%; padding: 2px;">MA LL 29.00</div> <div style="border: 1px solid black; border-radius: 50%; padding: 2px;">MA LL 31.00</div> </div>
PIPELINE STATIONING	<p>0+00 5+10 10+00 15+00 20+00 25+00 30+00 35+00 40+00 45+00 50+00</p>



ENVIRONMENTAL	
SOILS	

**NOTES**

- EXISTING TENNESSEE GAS PIPELINE PERMANENT EASEMENTS ARE NOT DEPICTED IN THEIR ENTIRETY.
- PUBLIC WETLANDS ARE OBTAINED FROM THE NATIONAL WETLAND INVENTORY (NWI) (AS DEFINED IN RESOURCE REPORT 2.3).
- PUBLIC STREAMS ARE OBTAINED FROM THE NATIONAL HYDROGRAPHY DATASET. (NHD). (AS DEFINED IN RESOURCE REPORT 2.2)
- PHOTO INTERPRETED WETLANDS AND STREAMS ARE A RESULT OF A HIGH RESOLUTION PHOTOGRAPHIC INTERPOLATION.
- DELINEATED WETLANDS AND STREAMS ARE THE RESULT OF AN ENVIRONMENTAL GROUND SURVEY.
- PROPERTY LINES ARE BASED ON TAX MAPS AND ARE NOT THE RESULT OF A FULL BOUNDARY SURVEY.
- TRENCH PLUGS SHALL BE INSTALLED AT ALL ROAD CROSSINGS AS DIRECTED BY THE ENVIRONMENTAL INSPECTOR.
- PERMANENT SLOPE BREAKERS SHOWN IN CULTIVATED AREAS AND LAWNS SHALL ONLY BE INSTALLED WITH THE LANDOWNER'S PERMISSION.

**LEGEND**

EXISTING PERMANENT EASEMENT	PROPERTY LINE
PROPOSED PERMANENT EASEMENT	MUNICIPAL LINE
TEMPORARY WORKSPACE	WETLAND (PUBLIC)
ADDITIONAL TEMPORARY WORKSPACE (ATWS)	WETLAND (PHOTO INTERPRETED)
POTENTIAL STAGING AREA	WETLAND (DELINEATED)
PROPOSED PIPELINE	STREAM (DELINEATED)
EXISTING TENNESSEE GAS PIPELINE	STREAM (PHOTO INTERPRETED)
EXISTING FOREIGN PIPELINE	STREAM (PUBLIC)
OVERHEAD POWER LINE	ACCESS ROAD
EXISTING FIBER OPTIC LINE	FENCE LINE

**REFERENCE DRAWINGS**

TYPICALS

**REVISIONS**

NO	PROJ ID	DESCRIPTION	DATE	BY	CK	APPR
0		ISSUE FOR FERC	11/2015	HMM	HMM	

**SCALE**

200 100 0 200 400

IMAGERY: APRIL/MAY 2015

**AREA:** DIV:

**DRAFTER:** HMM DATE: 01-12-15

**DRAFT COORD:** HMM DATE: 01-12-15

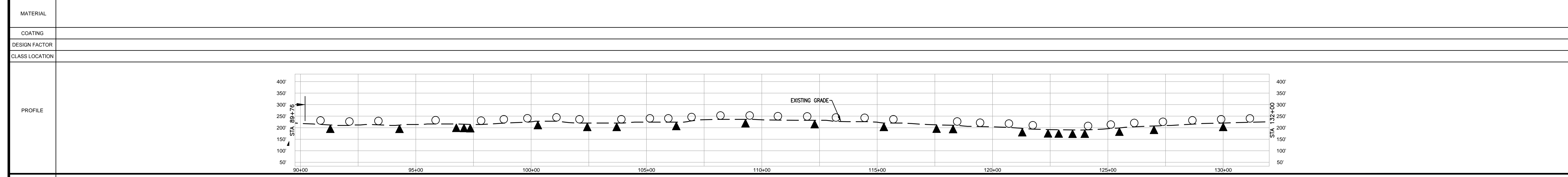
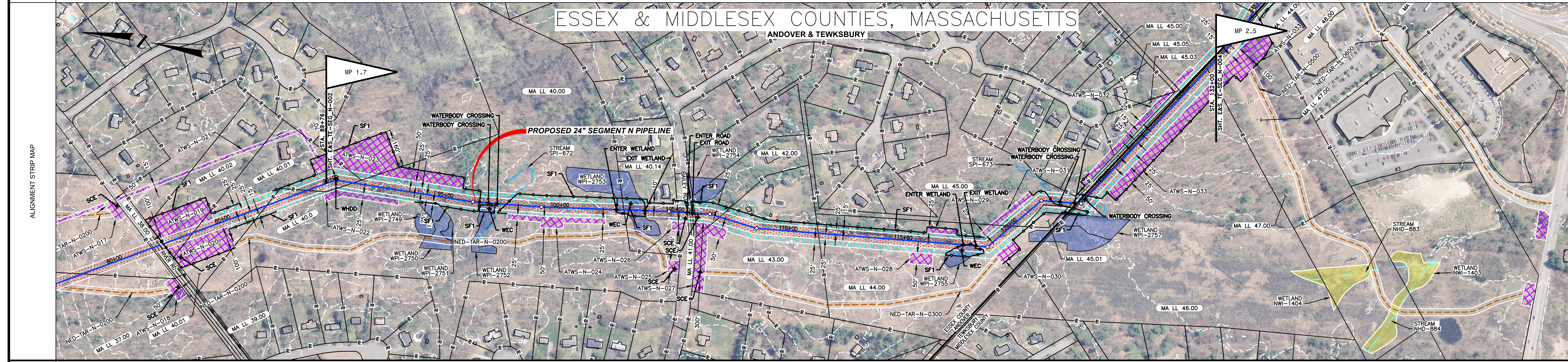
**DESIGN COORD:** DATE: SCALE: 1 = 200' PROJ. ID:

**PROJECT COORD:** DATE: E&S\_TE-SEG\_N-001

**OPER. APPR:** DATE: 0



PROTECTION EASEMENT																											
LINE LIST	<table border="1"> <tr> <td>88+76</td> <td>MA LL 40.01</td> </tr> <tr> <td>89+97</td> <td></td> </tr> <tr> <td></td> <td>MA LL 40.00</td> </tr> <tr> <td>102+77</td> <td>MA LL 40.14</td> </tr> <tr> <td>105+11</td> <td></td> </tr> <tr> <td>105+85</td> <td>MA LL 42.00</td> </tr> <tr> <td>106+86</td> <td>MA LL 43.00</td> </tr> <tr> <td></td> <td>MA LL 44.00</td> </tr> <tr> <td>120+05</td> <td>MA LL 45.00</td> </tr> <tr> <td>123+10</td> <td>MA LL 44.00</td> </tr> <tr> <td>123+40</td> <td>MA LL 46.00</td> </tr> <tr> <td>131+46</td> <td>MA LL 47.00</td> </tr> <tr> <td>132+00</td> <td></td> </tr> </table>	88+76	MA LL 40.01	89+97			MA LL 40.00	102+77	MA LL 40.14	105+11		105+85	MA LL 42.00	106+86	MA LL 43.00		MA LL 44.00	120+05	MA LL 45.00	123+10	MA LL 44.00	123+40	MA LL 46.00	131+46	MA LL 47.00	132+00	
88+76	MA LL 40.01																										
89+97																											
	MA LL 40.00																										
102+77	MA LL 40.14																										
105+11																											
105+85	MA LL 42.00																										
106+86	MA LL 43.00																										
	MA LL 44.00																										
120+05	MA LL 45.00																										
123+10	MA LL 44.00																										
123+40	MA LL 46.00																										
131+46	MA LL 47.00																										
132+00																											
PIPELINE STATIONING	<p>88+18 P.L. = 89+117.00' RT. 90+20 HDD ENTRY/EXIT LOCATION 90+97 PROPERTY LINE</p> <p>88+21 P.L. = 89+206.00' LT. 86+80 EDGE OF STREAM 86+92 EDGE OF STREAM 87+46 EDGE OF STREAM 87+30 EDGE OF STREAM</p> <p>88+20 P.L. = 89+172.00' LT.</p> <p>102+46 EDGE OF WETLAND 102+77 PROPERTY LINE</p> <p>103+69 EDGE OF WETLAND</p> <p>104+73 P.L. = 121+121.00' RT. 105+11 PROPERTY LINE 105+45 UTILITY POLE 159' LT. 105+52 EDGE OF PAVEMENT 105+59 WATER GATE 89' LT. 105+73 UTILITY POLE 15' LT. 105+74 OVERHEAD POWER LINE 105+75 EDGE OF PAVEMENT 105+84 UTILITY POLE 45' RT. 105+82 UTILITY POLE 159' RT. 105+81 P.L. = 121+647.00' RT. 106+86 PROPERTY LINE 111+31 PROPERTY LINE</p> <p>117+66 EDGE OF WETLAND 118+15 EDGE OF WETLAND 118+57 P.L. = 46+130.00' LT. 120+05 PROPERTY LINE</p> <p>121+74 P.L. = 46+000.00' RT. 122+43 EDGE OF STREAM 123+04 EDGE OF STREAM 123+10 PROPERTY LINE 123+29 COUNTY LINE 123+29 MUNICIPAL LINE 123+40 PROPERTY LINE 123+47 P.L. = 81+007.00' LT. 123+63 EDGE OF STREAM 123+80 EDGE OF STREAM</p> <p>131+46 PROPERTY LINE</p>																										



MATERIAL	
COATING	
DESIGN FACTOR	
CLASS LOCATION	
ENVIRONMENTAL	
SOILS	

**NOTES**

- EXISTING TENNESSEE GAS PIPELINE PERMANENT EASEMENTS ARE NOT DEPICTED IN THEIR ENTIRETY.
- PUBLIC WETLANDS ARE OBTAINED FROM THE NATIONAL WETLAND INVENTORY (NWI) (AS DEFINED IN RESOURCE REPORT 2.3).
- PUBLIC STREAMS ARE OBTAINED FROM THE NATIONAL HYDROGRAPHY DATASET. (NHD). (AS DEFINED IN RESOURCE REPORT 2.2)
- PHOTO INTERPRETED WETLANDS AND STREAMS ARE A RESULT OF A HIGH RESOLUTION PHOTOGRAPHIC INTERPOLATION.
- DELINEATED WETLANDS AND STREAMS ARE THE RESULT OF AN ENVIRONMENTAL GROUND SURVEY.
- PROPERTY LINES ARE BASED ON TAX MAPS AND ARE NOT THE RESULT OF A FULL BOUNDARY SURVEY.
- TRENCH PLUGS SHALL BE INSTALLED AT ALL ROAD CROSSINGS AS DIRECTED BY THE ENVIRONMENTAL INSPECTOR.
- PERMANENT SLOPE BREAKERS SHOWN IN CULTIVATED AREAS AND LAWNS SHALL ONLY BE INSTALLED WITH THE LANDOWNER'S PERMISSION.

**LEGEND**

	EXISTING PERMANENT EASEMENT		PROPOSED PERMANENT EASEMENT
	TEMPORARY WORKSPACE		ADDITIONAL TEMPORARY WORKSPACE (ATWS)
	POTENTIAL STAGING AREA		PROPOSED PIPELINE
	EXISTING TENNESSEE GAS PIPELINE		EXISTING FOREIGN PIPELINE
	OVERHEAD POWER LINE		EXISTING FIBER OPTIC LINE

**LEGEND**

	PA HG3 400.00 LINE LIST NUMBER		PROPERTY LINE
	MUNICIPAL LINE		WETLAND (PUBLIC)
	WETLAND (PHOTO INTERPRETED)		WETLAND (DELINEATED)
	STREAM (DELINEATED)		STREAM (PHOTO INTERPRETED)
	STREAM (PUBLIC)		ACCESS ROAD
	FENCE LINE		

**REFERENCE DRAWINGS**

TYPICALS

**REVISIONS**

NO	PROJ ID	DESCRIPTION	DATE	BY	CK	APPR
0		ISSUE FOR FERC	11/2015	HMM	HMM	

**SCALE**

200 100 0 200 400

IMAGERY: APRIL/MAY 2015

**AREA:**

DRAFTER: HMM DATE: 01-12-15

DRAFT COORD: HMM DATE: 01-12-15

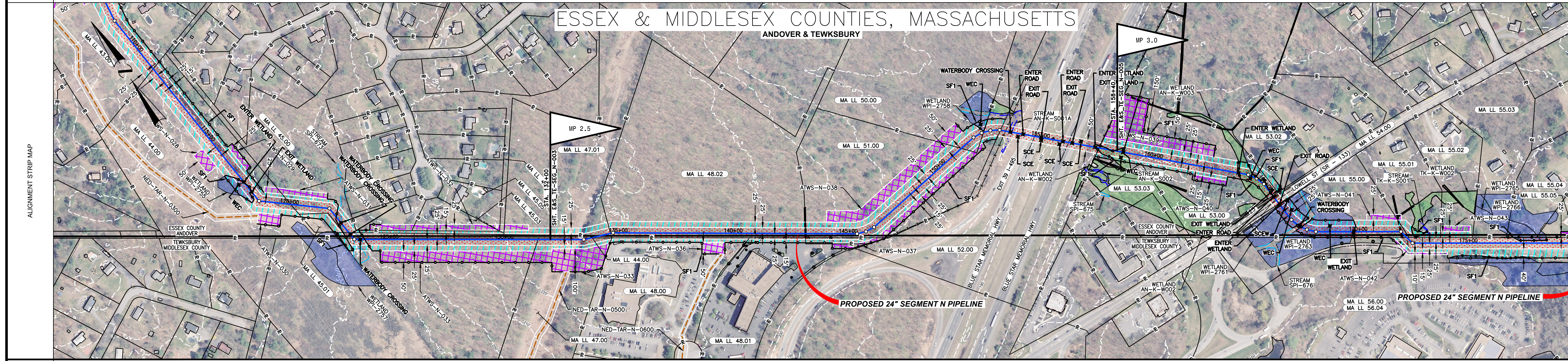
**Tennessee Gas Pipeline Company, L.L.C.**  
a Kinder Morgan company

**NORTHEAST ENERGY DIRECT PROJECT**  
**PROPOSED 24" PIPELINE**  
**SEGMENT N LYNNFIELD LATERAL**  
**EROSION & SEDIMENT CONTROL PLAN**  
**ALIGNMENT SHEET**  
**MIDDLESEX & ESSEX COUNTIES, MASSACHUSETTS**

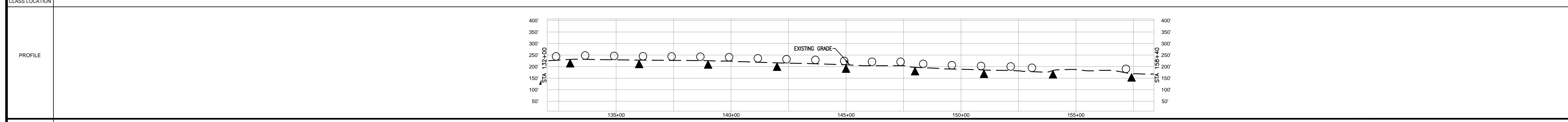
DESIGN COORD: DATE: SCALE: 1 = 200' PROJ. ID:

OPER. COORD: DATE: E&S\_TE-SEG\_N-003 0

PROTECTION EASEMENT																				
LINE LIST	<table border="1"> <tr> <td>132+00</td> <td>MA LL 47.00</td> <td>133+78</td> <td>MA LL 44.00</td> <td>134+25</td> <td>MA LL 47.01</td> <td>134+65</td> <td>MA LL 48.02</td> <td>143+14</td> <td>MA LL 51.00</td> <td>151+29</td> <td>MA LL 50.00</td> <td>152+48</td> <td>MA LL 51.00</td> <td>153+24</td> <td>MA LL 52.00</td> <td>157+60</td> <td>MA LL 53.00</td> <td>158+40</td> </tr> </table>	132+00	MA LL 47.00	133+78	MA LL 44.00	134+25	MA LL 47.01	134+65	MA LL 48.02	143+14	MA LL 51.00	151+29	MA LL 50.00	152+48	MA LL 51.00	153+24	MA LL 52.00	157+60	MA LL 53.00	158+40
132+00	MA LL 47.00	133+78	MA LL 44.00	134+25	MA LL 47.01	134+65	MA LL 48.02	143+14	MA LL 51.00	151+29	MA LL 50.00	152+48	MA LL 51.00	153+24	MA LL 52.00	157+60	MA LL 53.00	158+40		
PIPELINE STATIONING	<p>133+45 P.L. = 13300' G.L.  133+78 PROPERTY LINE  134+17 COUNTY LINE  134+17 MUNICIPAL LINE  134+65 PROPERTY LINE  134+78 P.L. = 13300' G.L.</p> <p>139+80 UTILITY POLE 132' RT.  140+45 UTILITY POLE 85' RT.  140+56 WATER GATE 72' RT.  140+72 WATER GATE 85' RT.  141+17 UTILITY POLE 23' RT.  142+00 UTILITY POLE 80' RT.  142+24 UTILITY POLE 21' RT.</p> <p>143+10 WALL  143+14 PROPERTY LINE  143+16 WALL  143+25 UTILITY POLE 21' RT.  143+43 UTILITY POLE 85' RT.  144+22 UTILITY POLE 18' RT.  144+33 UTILITY POLE 85' RT.  145+37 P.L. = 14500' G.L.  145+77 P.L. = 14500' G.L.</p> <p>151+29 PROPERTY LINE  152+40 P.L. = 15200' G.L.  152+40 P.L. = 15200' G.L.  152+48 P.L. = 15200' G.L.  153+20 P.L. = 15300' G.L.  153+24 PROPERTY LINE  153+24 FENCE  153+24 FENCE OF STREAM  153+24 EDGE OF STREAM  154+75 E. OF BLUE STAR MEMORIAL HWY</p> <p>156+25 E. OF BLUE STAR MEMORIAL HWY</p> <p>157+42 EDGE OF WETLAND  157+58 FENCE LINE  158+05 FENCE LINE  158+05 EDGE OF WETLAND  158+25 EDGE OF WETLAND</p>																			



MATERIAL	
COATING	
DESIGN FACTOR	
CLASS LOCATION	



ENVIRONMENTAL	
SOILS	

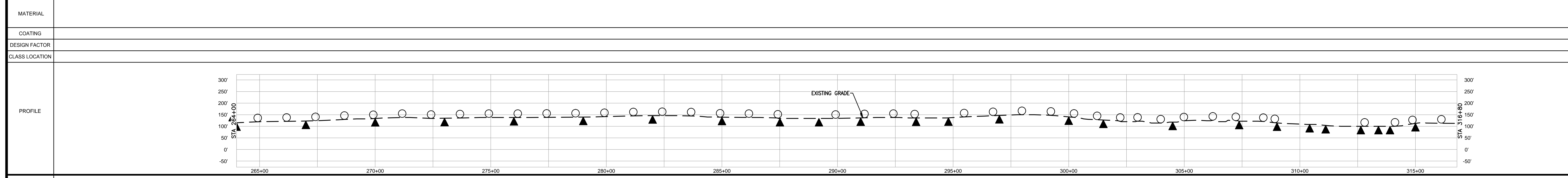
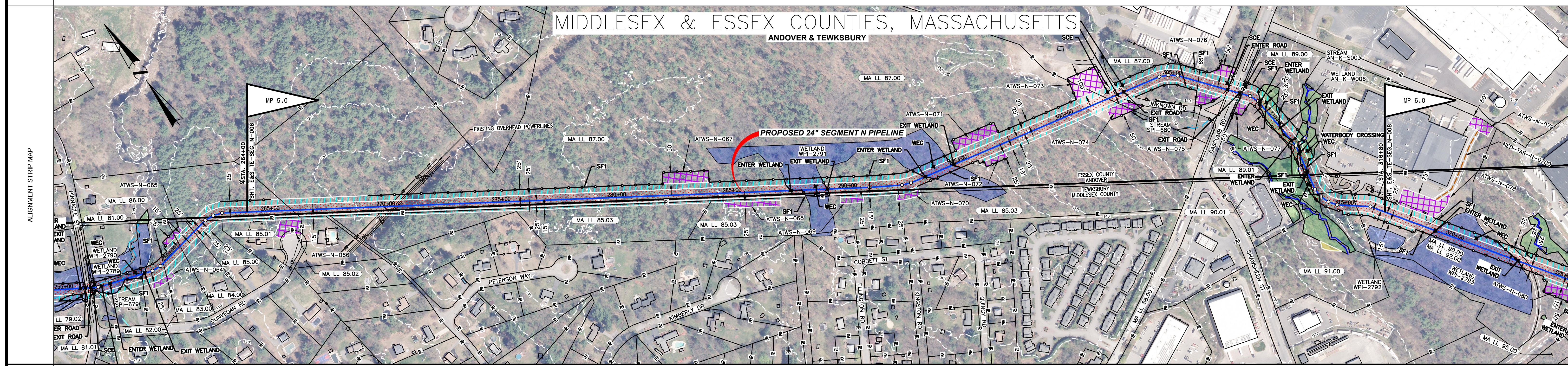
PROFILE LEGEND	
SLOPE BREAKERS	○
TRENCH PLUG	▲

NOTES	LEGEND	REFERENCE DRAWINGS	TYPICALS	SCALE 200 100 0 200 400 IMAGERY: APRIL/MAY 2015	REVISIONS	AREA:	DIV.:	Tennessee Gas Pipeline Company, L.L.C. a Kinder Morgan company	
					0	ISSUE FOR FER	11/2015		HMM
<p>1. EXISTING TENNESSEE GAS PIPELINE PERMANENT EASEMENTS ARE NOT DEPICTED IN THEIR ENTIRETY.</p> <p>2. PUBLIC WETLANDS ARE OBTAINED FROM THE NATIONAL WETLAND INVENTORY (NWI) (AS DEFINED IN RESOURCE REPORT 2.3).</p> <p>3. PUBLIC STREAMS ARE OBTAINED FROM THE NATIONAL HYDROGRAPHY DATASET. (NHD). (AS DEFINED IN RESOURCE REPORT 2.2).</p> <p>4. PHOTO INTERPRETED WETLANDS AND STREAMS ARE A RESULT OF A HIGH RESOLUTION PHOTOGRAPHIC INTERPOLATION.</p> <p>5. DELINEATED WETLANDS AND STREAMS ARE THE RESULT OF AN ENVIRONMENTAL GROUND SURVEY.</p> <p>6. PROPERTY LINES ARE BASED ON TAX MAPS AND ARE NOT THE RESULT OF A FULL BOUNDARY SURVEY.</p> <p>7. TRENCH PLUGS SHALL BE INSTALLED AT ALL ROAD CROSSINGS AS DIRECTED BY THE ENVIRONMENTAL INSPECTOR.</p> <p>8. PERMANENT SLOPE BREAKERS SHOWN IN CULTIVATED AREAS AND LAWNS SHALL ONLY BE INSTALLED WITH THE LANDOWNER'S PERMISSION.</p>					<p>DESIGN COORD: HMM</p>		DATE:	SCALE: 1" = 200'	PROJ. ID.:
					<p>PROJECT COORD: HMM</p>		DATE:	E&S_TE-SEG_N-004	0
					<p>OPER. APPR:</p>		DATE:		





PROTECTION EASEMENT	
LINE LIST	<p>MA LL 86.00</p> <p>MA LL 87.00</p> <p>MA LL 87.00</p> <p>MA LL 89.00</p> <p>MA LL 90.00</p> <p>MA LL 91.00</p> <p>MA LL 90.00</p> <p>MA LL 92.00</p>
PIPELINE STATIONING	<p>265+95 PROPERTY LINE</p> <p>266+24 UTILITY POLE 114' RT.</p> <p>266+21 UTILITY POLE 111' RT.</p> <p>269+65 UTILITY POLE 41' RT.</p> <p>269+77 UTILITY POLE 53' RT.</p> <p>269+85 OVERHEAD POWER LINE</p> <p>270+05 OVERHEAD POWER LINE</p> <p>270+25 OVERHEAD POWER LINE</p> <p>270+35 OVERHEAD POWER LINE</p> <p>270+44 OVERHEAD POWER LINE</p> <p>270+51 OVERHEAD POWER LINE</p> <p>270+60 OVERHEAD POWER LINE</p> <p>270+68 OVERHEAD POWER LINE</p> <p>271+57 UTILITY POLE 114' LT.</p> <p>271+68 UTILITY POLE 104' LT.</p> <p>271+84 UTILITY POLE 168' LT.</p> <p>287+53 EDGE OF WETLAND</p> <p>287+99 EDGE OF WETLAND</p> <p>288+01 EDGE OF WETLAND</p> <p>289+12 EDGE OF WETLAND</p> <p>290+83 P.A. = 118927' LT.</p> <p>292+35 P.A. = 118946' LT.</p> <p>292+75 P.A. = 118946' LT.</p> <p>293+42 EDGE OF WETLAND</p> <p>294+77 EDGE OF WETLAND</p> <p>302+01 PROPERTY LINE</p> <p>302+46 EDGE OF PAVEMENT</p> <p>302+57 UTILITY POLE 115' LT.</p> <p>302+67 UTILITY POLE 115' LT.</p> <p>302+76 EDGE OF PAVEMENT</p> <p>303+54 UTILITY POLE 88' RT.</p> <p>304+54 P.A. = 118901' RT.</p> <p>304+54 P.A. = 118901' RT.</p> <p>305+68 UTILITY POLE 115' RT.</p> <p>307+02 UTILITY POLE 81' RT.</p> <p>307+07 UTILITY POLE 144' RT.</p> <p>307+47 EDGE OF PAVEMENT</p> <p>307+49 PROPERTY LINE</p> <p>307+84 UTILITY POLE 88' RT.</p> <p>308+02 EDGE OF PAVEMENT</p> <p>308+05 GUARD RAIL</p> <p>308+10 PROPERTY LINE</p> <p>308+10 UTILITY POLE 49' LT.</p> <p>308+22 UTILITY POLE 149' LT.</p> <p>308+30 P.A. = 118902' RT.</p> <p>308+30 P.A. = 118902' RT.</p> <p>309+02 EDGE OF WETLAND</p> <p>310+41 EDGE OF WETLAND</p> <p>311+12 EDGE OF WETLAND</p> <p>311+25 EDGE OF STREAM</p> <p>311+87 EDGE OF STREAM</p> <p>311+87 EDGE OF WETLAND</p> <p>312+81 COUNTY LINE</p> <p>312+81 MUNICIPAL LINE</p> <p>312+81 PROPERTY LINE</p> <p>313+44 P.A. = 118933' LT.</p> <p>313+44 P.A. = 118933' LT.</p> <p>313+81 EDGE OF WETLAND</p> <p>313+83 EDGE OF WETLAND</p> <p>314+28 P.A. = 118933' LT.</p> <p>314+28 P.A. = 118933' LT.</p> <p>315+52 PROPERTY LINE</p> <p>316+13 UTILITY POLE 67' LT.</p>



MATERIAL	
COATING	
DESIGN FACTOR	
CLASS LOCATION	
ENVIRONMENTAL	
SOILS	

**PROFILE LEGEND**

SLOPE BREAKERS ○

TRENCH PLUG ▲

**NOTES**

- EXISTING TENNESSEE GAS PIPELINE PERMANENT EASEMENTS ARE NOT DEPICTED IN THEIR ENTIRETY.
- PUBLIC WETLANDS ARE OBTAINED FROM THE NATIONAL WETLAND INVENTORY (NWI) (AS DEFINED IN RESOURCE REPORT 2.3)
- PUBLIC STREAMS ARE OBTAINED FROM THE NATIONAL HYDROGRAPHY DATASET. (NHD) (AS DEFINED IN RESOURCE REPORT 2.2)
- PHOTO INTERPRETED WETLANDS AND STREAMS ARE A RESULT OF A HIGH RESOLUTION PHOTOGRAPHIC INTERPOLATION.
- DELINEATED WETLANDS AND STREAMS ARE THE RESULT OF AN ENVIRONMENTAL GROUND SURVEY.
- PROPERTY LINES ARE BASED ON TAX MAPS AND ARE NOT THE RESULT OF A FULL BOUNDARY SURVEY.
- TRENCH PLUGS SHALL BE INSTALLED AT ALL ROAD CROSSINGS AS DIRECTED BY THE ENVIRONMENTAL INSPECTOR.
- PERMANENT SLOPE BREAKERS SHOWN IN CULTIVATED AREAS AND LAWNS SHALL ONLY BE INSTALLED WITH THE LANDOWNER'S PERMISSION.

**LEGEND**

	EXISTING PERMANENT EASEMENT		PROPOSED PERMANENT EASEMENT		PROPOSED PIPELINE
	TEMPORARY WORKSPACE		ADDITIONAL TEMPORARY WORKSPACE (ATWS)		EXISTING TENNESSEE GAS PIPELINE
	POTENTIAL STAGING AREA		WETLAND (PUBLIC)		EXISTING FOREIGN PIPELINE
			WETLAND (PHOTO INTERPRETED)		OVERHEAD POWER LINE
			WETLAND (DELINEATED)		EXISTING FIBER OPTIC LINE
			STREAM (DELINEATED)		
			STREAM (PHOTO INTERPRETED)		
			ACCESS ROAD		
			FENCE LINE		

**REFERENCE DRAWINGS**

TYPICALS

**REVISIONS**

NO	PROJ ID	DESCRIPTION	DATE	BY	CK	APPR
0		ISSUE FOR FERC	11/2015	HMM	HMM	

**SCALE**

200 100 0 200 400

IMAGERY: APRIL/MAY 2015

**AREA:** HMM  
**DIVISION:** HMM

**DATE:** 01-12-15  
**DATE:** 01-12-15

**Tennessee Gas Pipeline Company, L.L.C.**  
a Kinder Morgan company

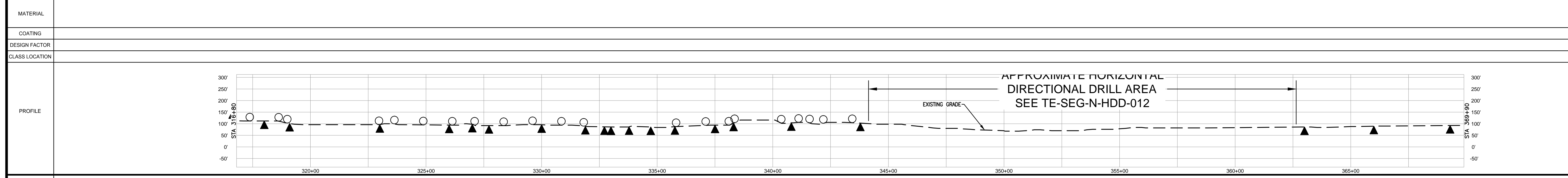
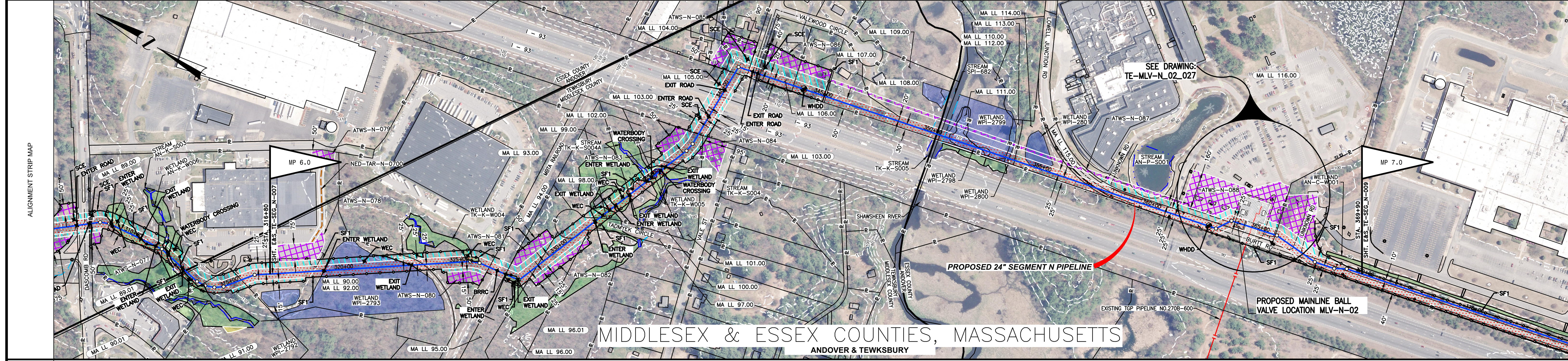
**NORTHEAST ENERGY DIRECT PROJECT**  
**PROPOSED 24" PIPELINE**  
**SEGMENT N LYNNFIELD LATERAL**  
**EROSION & SEDIMENT CONTROL PLAN**  
**ALIGNMENT SHEET**  
**MIDDLESEX & ESSEX COUNTIES, MASSACHUSETTS**

**DESIGN COORD:** HMM  
**PROJECT COORD:** HMM  
**OPER. APPR:**

**DATE:**  
**DATE:**  
**DATE:**

**SCALE:** 1" = 200'  
**PROJ. ID.:** E&S\_TE-SEG\_N-007  
**0**

PROTECTION EASEMENT	LINE LIST	PIPELINE STATIONING
	MA LL 80.00 MA LL 92.00	317+19 UTILITY POLE 61' LT. 318+43 UTILITY POLE 56' LT. 319+14 EDGE OF WETLAND 322+83 EDGE OF WETLAND 323+44 PROPERTY LINE 324+18 P.I. = 137272' 00" 326+34 PROPERTY LINE 326+83 & MBRA RAILROAD 327+11 EDGE OF WETLAND 327+70 EDGE OF WETLAND 327+70 P.I. = 807572' 11" 328+72 PROPERTY LINE
	MA LL 93.00	329+21
	MA LL 94.00	329+84
	MA LL 95.00	329+21
	MA LL 96.00	329+84
	MA LL 97.00	329+21
	MA LL 98.00	329+84
	MA LL 99.00	329+21
	MA LL 100.00	329+84
	MA LL 101.00	329+21
	MA LL 102.00	329+84
	MA LL 103.00	329+21
	MA LL 104.00	329+84
	MA LL 105.00	329+21
	MA LL 106.00	329+84
	MA LL 107.00	329+21
	MA LL 108.00	329+84
	MA LL 109.00	329+21
	MA LL 110 MA LL 112	329+84
	MA LL 111.00	329+21
	MA LL 112.00	329+84
	MA LL 113.00	329+21
	MA LL 114.00	329+84
	MA LL 115.00	329+21
	MA LL 116.00	329+84
	MA LL 117.00	329+21
	MA LL 118.00	329+84
	MA LL 119.00	329+21
	MA LL 120.00	329+84



ENVIRONMENTAL	SOILS

**NOTES**

- EXISTING TENNESSEE GAS PIPELINE PERMANENT EASEMENTS ARE NOT DEPICTED IN THEIR ENTIRETY.
- PUBLIC WETLANDS ARE OBTAINED FROM THE NATIONAL WETLAND INVENTORY (NWI) (AS DEFINED IN RESOURCE REPORT 2.3).
- PUBLIC STREAMS ARE OBTAINED FROM THE NATIONAL HYDROGRAPHY DATASET. (NHD) (AS DEFINED IN RESOURCE REPORT 2.2).
- PHOTO INTERPRETED WETLANDS AND STREAMS ARE A RESULT OF A HIGH RESOLUTION PHOTOGRAPHIC INTERPOLATION.
- DELINEATED WETLANDS AND STREAMS ARE THE RESULT OF AN ENVIRONMENTAL GROUND SURVEY.
- PROPERTY LINES ARE BASED ON TAX MAPS AND ARE NOT THE RESULT OF A FULL BOUNDARY SURVEY.
- TRENCH PLUGS SHALL BE INSTALLED AT ALL ROAD CROSSINGS AS DIRECTED BY THE ENVIRONMENTAL INSPECTOR.
- PERMANENT SLOPE BREAKERS SHOWN IN CULTIVATED AREAS AND LAWNS SHALL ONLY BE INSTALLED WITH THE LANDOWNER'S PERMISSION.

**LEGEND**

	EXISTING PERMANENT EASEMENT		PROPOSED PERMANENT EASEMENT		PROPOSED PIPELINE
	TEMPORARY WORKSPACE		POTENTIAL STAGING AREA		EXISTING TENNESSEE GAS PIPELINE
	ADDITIONAL TEMPORARY WORKSPACE (ATWS)		PROPOSED PIPELINE		EXISTING FOREIGN PIPELINE
	POTENTIAL STAGING AREA		EXISTING TENNESSEE GAS PIPELINE		OVERHEAD POWER LINE
	PROPOSED PIPELINE		EXISTING FOREIGN PIPELINE		FENCE LINE
	EXISTING TENNESSEE GAS PIPELINE		EXISTING FOREIGN PIPELINE		
	EXISTING FOREIGN PIPELINE		OVERHEAD POWER LINE		
	OVERHEAD POWER LINE		EXISTING FIBER OPTIC LINE		
	EXISTING FIBER OPTIC LINE				

**REFERENCE DRAWINGS**

TYPICALS

**REVISIONS**

NO	PROJ ID	DESCRIPTION	DATE	BY	CK	APPR
0		ISSUE FOR FERC	11/2015	HMM	HMM	

**SCALE**

200 100 0 200 400

IMAGERY: APRIL/MAY 2015

**AREA:** DIV:

**DRAFTER:** HMM DATE: 01-12-15

**DRAWN:** HMM DATE: 01-12-15

**COORD:** HMM

**NORTHEAST ENERGY DIRECT PROJECT**  
**PROPOSED 24" PIPELINE**  
**SEGMENT N LYNNFIELD LATERAL**  
**EROSION & SEDIMENT CONTROL PLAN**  
**ALIGNMENT SHEET**  
**MIDDLESEX & ESSEX COUNTIES, MASSACHUSETTS**

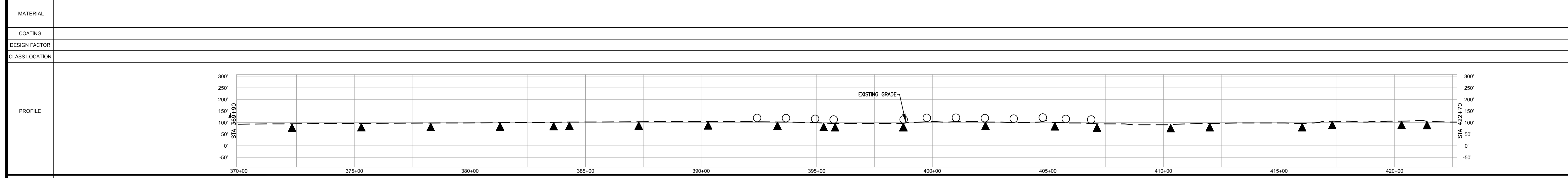
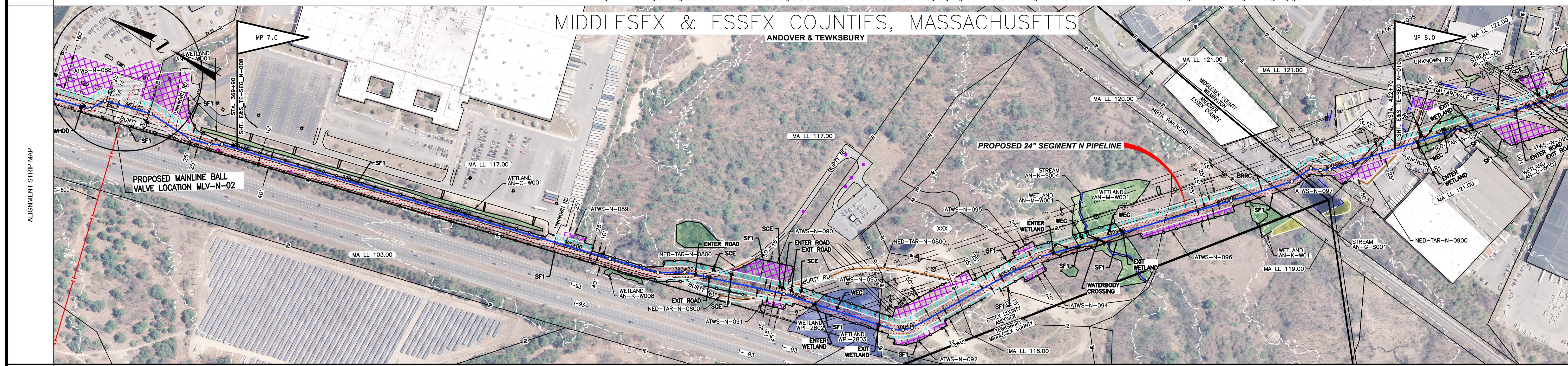
**DESIGN COORD:** DATE: SCALE: 1 = 200' PROJ. ID:

**PROJECT COORD:** DATE: E&S\_TE-SEG\_N-008 0

**OPER. APPR:** DATE:



PROTECTION EASEMENT	
LINE LIST	<p>369+90 MA LL 117.00</p> <p>370+37 UTILITY POLE 166' LT.</p> <p>372+32 UTILITY POLE 165' LT.</p> <p>379+62 UTILITY POLE 164' LT.</p> <p>381+67 UTILITY POLE 164' LT.</p> <p>383+70 EDGE OF PAVEMENT 383+82 UTILITY POLE 164' LT. 384+20 EDGE OF PAVEMENT 384+23 FENCE</p> <p>386+20 P.A. = 173000' LT.</p> <p>388+14 GUARD RAIL</p> <p>390+39 EDGE OF PAVEMENT 390+45 E. OF BURTT RD 390+87 GATE 391+12 EDGE OF PAVEMENT</p> <p>393+52 UTILITY POLE 77' RT. 393+63 UTILITY POLE 86' RT. 393+75 E. OF BURTT RD 394+12 P.A. = 173000' LT.</p> <p>394+77 OVERHEAD POWER LINE 395+14 OVERHEAD POWER LINE 395+18 UTILITY POLE 59' RT. 395+42 E. OF BURTT RD 395+82 EDGE OF WETLAND 395+94 OVERHEAD POWER LINE 396+28 OVERHEAD POWER LINE 396+78 UTILITY POLE 146' LT. 397+03 OVERHEAD POWER LINE 397+28 OVERHEAD POWER LINE 398+45 UTILITY POLE 32' LT. 398+74 EDGE OF WETLAND 398+82 UTILITY POLE 130' LT. 398+85 UTILITY POLE 74' LT. 398+90 UTILITY POLE 117' LT. 398+91 UTILITY POLE 182' LT. 398+94 UTILITY POLE 182' LT. 398+96 UTILITY POLE 86' LT. 398+98 P.A. = 173000' LT.</p> <p>399+43 UTILITY POLE 117' LT. 399+45 UTILITY POLE 118' LT. 400+52 UTILITY POLE 124' LT. 401+01 UTILITY POLE 123' LT. 401+07 UTILITY POLE 150' LT. 402+56 PROPERTY LINE 403+46 E. OF BURTT RD 403+84 E. OF TRAIL</p> <p>406+54 P.A. = 173000' LT.</p> <p>407+15 EDGE OF WETLAND 407+91 EDGE OF WETLAND 407+99 UTILITY POLE 151' LT. 408+01 UTILITY POLE 172' LT. 408+02 E. OF BURTT RD 408+13 E. OF BURTT RD 408+13 EDGE OF WETLAND 409+23 EDGE OF WETLAND 409+23 EDGE OF WETLAND 410+29 EDGE OF WETLAND</p> <p>412+18 E. OF TRAIL 414+29 UTILITY POLE 161' LT. 414+30 UTILITY POLE 171' LT. 415+17 P.A. = 173000' LT.</p> <p>416+13 PROPERTY LINE 416+59 E. METRA RAILROAD 417+10 FENCE 417+13 PROPERTY LINE 418+35 MUNICIPAL LINE 418+35 MUNICIPAL LINE 418+52 PROPERTY LINE 418+53 P.A. = 450000' LT. 418+53 P.A. = 450000' LT. 418+53 P.A. = 450000' LT. 418+82 EDGE OF PAVEMENT 420+12 EDGE OF PAVEMENT 420+68 PROPERTY LINE 420+72 UTILITY POLE 159' RT. 420+89 WATER GATE 159' RT. 420+91 WATER GATE 179' RT. 421+10 EDGE OF PAVEMENT 421+17 PROPERTY LINE 421+50 EDGE OF PAVEMENT 421+51 FENCE OF PAVEMENT 422+33 UTILITY POLE 89' RT.</p>



MATERIAL	
COATING	
DESIGN FACTOR	
CLASS LOCATION	
ENVIRONMENTAL	
SOILS	

**NOTES**

- EXISTING TENNESSEE GAS PIPELINE PERMANENT EASEMENTS ARE NOT DEPICTED IN THEIR ENTIRETY.
- PUBLIC WETLANDS ARE OBTAINED FROM THE NATIONAL WETLAND INVENTORY (NWI) (AS DEFINED IN RESOURCE REPORT 2.3).
- PUBLIC STREAMS ARE OBTAINED FROM THE NATIONAL HYDROGRAPHY DATASET. (NHD). (AS DEFINED IN RESOURCE REPORT 2.2)
- PHOTO INTERPRETED WETLANDS AND STREAMS ARE A RESULT OF A HIGH RESOLUTION PHOTOGRAPHIC INTERPOLATION.
- DELINEATED WETLANDS AND STREAMS ARE THE RESULT OF AN ENVIRONMENTAL GROUND SURVEY.
- PROPERTY LINES ARE BASED ON TAX MAPS AND ARE NOT THE RESULT OF A FULL BOUNDARY SURVEY.
- TRENCH PLUGS SHALL BE INSTALLED AT ALL ROAD CROSSINGS AS DIRECTED BY THE ENVIRONMENTAL INSPECTOR.
- PERMANENT SLOPE BREAKERS SHOWN IN CULTIVATED AREAS AND LIMNS SHALL ONLY BE INSTALLED WITH THE LANDOWNER'S PERMISSION.

**LEGEND**

EXISTING PERMANENT EASEMENT	PROPOSED PERMANENT EASEMENT	TEMPORARY WORKSPACE	ADDITIONAL TEMPORARY WORKSPACE (ATWS)	POTENTIAL STAGING AREA	PROPOSED PIPELINE	EXISTING TENNESSEE GAS PIPELINE	EXISTING FOREIGN PIPELINE	OVERHEAD POWER LINE	EXISTING FIBER OPTIC LINE
-----------------------------	-----------------------------	---------------------	---------------------------------------	------------------------	-------------------	---------------------------------	---------------------------	---------------------	---------------------------

**LIMITS OF DISTURBANCE**

PA HG3 400.00	LINE LIST NUMBER
R	PROPERTY LINE
M	MUNICIPAL LINE
W	WETLAND (PUBLIC)
P	WETLAND (PHOTO INTERPRETED)
D	WETLAND (DELINEATED)
S	STREAM (DELINEATED)
I	STREAM (PHOTO INTERPRETED)
P	STREAM (PUBLIC)
A	ACCESS ROAD
F	FENCE LINE

**REFERENCE DRAWINGS**

TYPICALS

**REVISIONS**

NO	PROJ ID	DESCRIPTION	DATE	BY	CK	APPR
0		ISSUE FOR FERC	11/2015	HMM	HMM	

**SCALE**

200 100 0 200 400

IMAGERY: APRIL/MAY 2015

**AREA:** DIV.:

DRAFTER: HMM DATE: 01-12-15

DRAFT: HMM DATE: 01-12-15

COORD: HMM

**Tennessee Gas Pipeline Company, L.L.C.**  
a Kinder Morgan company

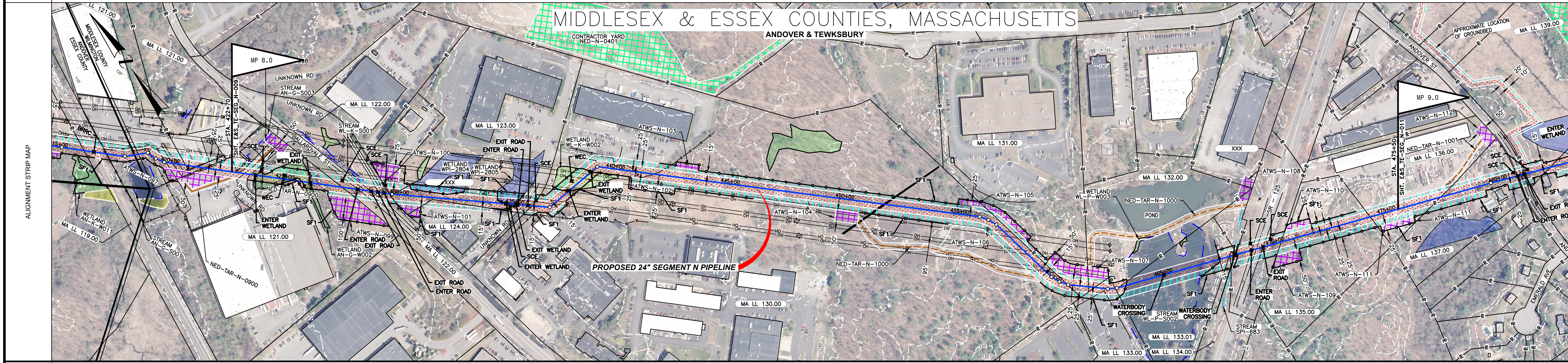
**NORTHEAST ENERGY DIRECT PROJECT**  
**PROPOSED 24" PIPELINE**  
**SEGMENT N LYNNFIELD LATERAL**  
**EROSION & SEDIMENT CONTROL PLAN**  
**ALIGNMENT SHEET**  
**MIDDLESEX & ESSEX COUNTY, MASSACHUSETTS**

DESIGN COORD: DATE: SCALE: 1 = 200' PROJ. ID:

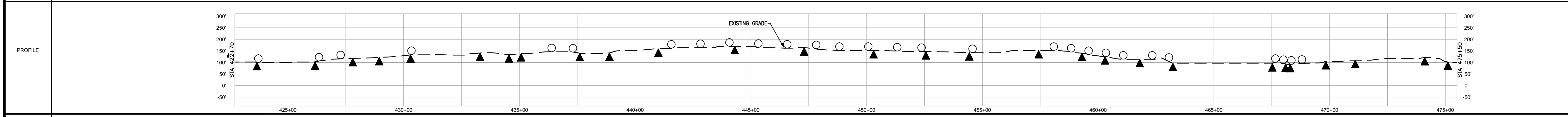
PROJECT COORD: DATE: E&S\_TE-SEG\_N-009

OPER. APPR: DATE: 0

PROTECTION EASEMENT	
LINE LIST	<p>422+70 MA LL 121.00</p> <p>422+50 MA LL 122.00</p> <p>429+57 MA LL 123.00</p> <p>429+72 XXX</p> <p>435+74 MA LL 130.00</p> <p>460+73 MA LL 131.00</p> <p>461+66 MA LL 132.00</p> <p>461+93 MA LL 133.00</p> <p>462+81 MA LL 132.00</p> <p>462+98 MA LL 133.01</p> <p>462+93 MA LL 134.00</p> <p>470+28 XXX</p> <p>471+95 MA LL 135.00</p> <p>475+50 MA LL 136.00</p>
PIPELINE STATIONING	<p>423+52 EDGE OF PAVEMENT</p> <p>423+69 UTILITY POLE 27' RT.</p> <p>423+70 EDGE OF WETLAND</p> <p>424+04 WATER GATE 146' RT.</p> <p>425+18 WATER GATE 156' LT.</p> <p>425+32 EDGE OF WETLAND</p> <p>425+54 EDGE OF PAVEMENT</p> <p>425+56 EDGE OF PAVEMENT</p> <p>426+00 EDGE OF WETLAND</p> <p>426+12 EDGE OF WETLAND</p> <p>427+29 UTILITY POLE 200' LT.</p> <p>427+50 UTILITY POLE 179' LT.</p> <p>427+50 UTILITY POLE 179' LT.</p> <p>428+08 UTILITY POLE 85' RT.</p> <p>428+16 E. OF BALLADONALE ST</p> <p>428+19 EDGE OF PAVEMENT</p> <p>428+42 UTILITY POLE 139' LT.</p> <p>428+42 UTILITY POLE 139' LT.</p> <p>428+49 OVERHEAD POWER LINE</p> <p>428+77 EDGE OF PAVEMENT</p> <p>429+07 EDGE OF PAVEMENT</p> <p>429+23 UTILITY POLE 87' LT.</p> <p>429+34 EDGE OF PAVEMENT</p> <p>429+57 PROPERTY LINE</p> <p>429+61 OVERHEAD POWER LINE</p> <p>429+72 PROPERTY LINE</p> <p>429+88 UTILITY POLE 144' RT.</p> <p>430+88 UTILITY POLE 144' RT.</p> <p>434+00 UTILITY POLE 181' RT.</p> <p>434+26 UTILITY POLE 156' LT.</p> <p>434+27 UTILITY POLE 176' LT.</p> <p>434+64 EDGE OF WETLAND</p> <p>434+91 UTILITY POLE 81' RT.</p> <p>435+74 WETLAND AND LAND PROPERTY LINE</p> <p>435+74 PROPERTY LINE</p> <p>438+52 P.I. = 457245' LT.</p> <p>438+75 OVERHEAD POWER LINE</p> <p>438+95 OVERHEAD POWER LINE</p> <p>438+95 EDGE OF WETLAND</p> <p>437+64 EDGE OF WETLAND</p> <p>437+78 OVERHEAD POWER LINE</p> <p>437+78 WATER GATE 139' LT.</p> <p>438+44 OVERHEAD POWER LINE</p> <p>438+88 EDGE OF WETLAND</p> <p>438+88 EDGE OF WETLAND</p> <p>439+53 P.I. = 472597' RT.</p> <p>440+88 FENCE</p> <p>441+68 FENCE</p> <p>442+06 UTILITY POLE 40' RT.</p> <p>442+06 UTILITY POLE 61' RT.</p> <p>448+47 UTILITY POLE 43' RT.</p> <p>448+47 UTILITY POLE 65' RT.</p> <p>451+71 WALL</p> <p>451+77 WALL</p> <p>456+88 P.I. = 122009' RT.</p> <p>456+45 UTILITY POLE 36' RT.</p> <p>456+58 P.I. = 122009' RT.</p> <p>456+58 P.I. = 122009' RT.</p> <p>457+08 OVERHEAD POWER LINE</p> <p>457+44 OVERHEAD POWER LINE</p> <p>458+28 OVERHEAD POWER LINE</p> <p>458+56 OVERHEAD POWER LINE</p> <p>459+64 OVERHEAD POWER LINE</p> <p>459+64 OVERHEAD POWER LINE</p> <p>459+67 P.I. = 122825' LT.</p> <p>459+67 P.I. = 122825' LT.</p> <p>461+27 P.I. = 122825' LT.</p> <p>461+27 P.I. = 122825' LT.</p> <p>461+66 PROPERTY LINE</p> <p>461+83 PROPERTY LINE</p> <p>462+98 P.I. = 102517' LT.</p> <p>462+98 P.I. = 102517' LT.</p> <p>462+98 P.I. = 102517' LT.</p> <p>463+04 UTILITY POLE 162' LT.</p> <p>463+09 UTILITY POLE 167' LT.</p> <p>463+30 EDGE OF STREAM</p> <p>466+67 EDGE OF STREAM</p> <p>467+03 PROPERTY LINE</p> <p>467+03 PROPERTY LINE</p> <p>468+11 EDGE OF STREAM</p> <p>468+25 EDGE OF STREAM</p> <p>468+93 EDGE OF PAVEMENT</p> <p>469+44 EDGE OF PAVEMENT</p> <p>470+28 PROPERTY LINE</p> <p>474+25 PROPERTY LINE</p>



MATERIAL	
COATING	
DESIGN FACTOR	
CLASS LOCATION	

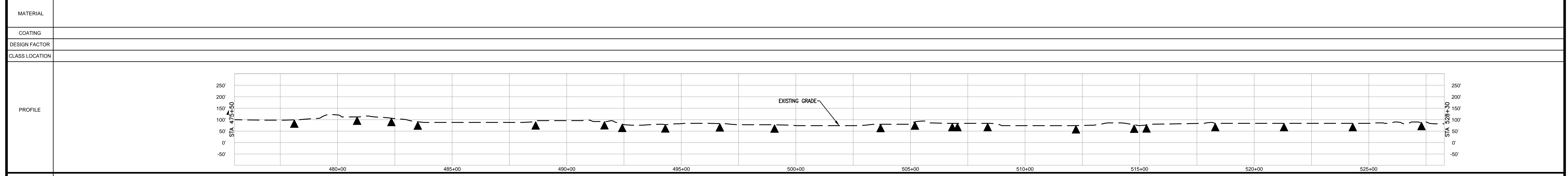
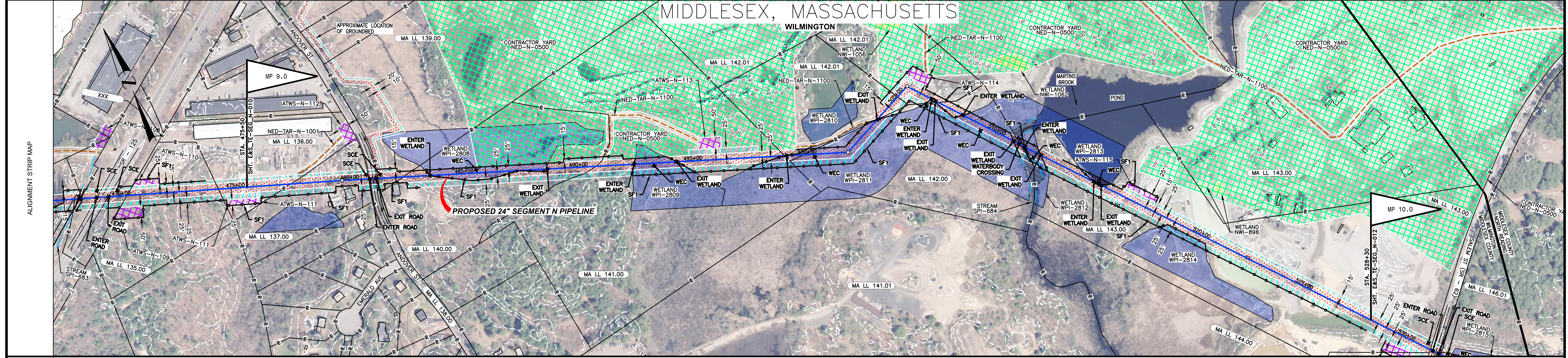


ENVIRONMENTAL	
SOILS	

PROFILE LEGEND	
SLOPE BREAKERS	○
TRENCH PLUG	▲

<p><b>NOTES</b></p> <ol style="list-style-type: none"> <li>EXISTING TENNESSEE GAS PIPELINE PERMANENT EASEMENTS ARE NOT DEPICTED IN THEIR ENTIRETY.</li> <li>PUBLIC WETLANDS ARE OBTAINED FROM THE NATIONAL WETLAND INVENTORY (NWI) (AS DEFINED IN RESOURCE REPORT 2.3).</li> <li>PUBLIC STREAMS ARE OBTAINED FROM THE NATIONAL HYDROGRAPHY DATASET. (NHD). (AS DEFINED IN RESOURCE REPORT 2.2)</li> <li>PHOTO INTERPRETED WETLANDS AND STREAMS ARE THE RESULT OF A HIGH RESOLUTION PHOTOGRAPHIC INTERPOLATION.</li> <li>DELINEATED WETLANDS AND STREAMS ARE THE RESULT OF AN ENVIRONMENTAL GROUND SURVEY.</li> <li>PROPERTY LINES ARE BASED ON TAX MAPS AND ARE NOT THE RESULT OF A FULL BOUNDARY SURVEY.</li> <li>TRENCH PLUGS SHALL BE INSTALLED AT ALL ROAD CROSSINGS AS DIRECTED BY THE ENVIRONMENTAL INSPECTOR.</li> <li>PERMANENT SLOPE BREAKERS SHOWN IN CULTIVATED AREAS AND LAWNS SHALL ONLY BE INSTALLED WITH THE LANDOWNER'S PERMISSION.</li> </ol>	<p><b>LEGEND</b></p> <table border="0"> <tr> <td></td> <td>EXISTING PERMANENT EASEMENT</td> <td></td> <td>PROPOSED PERMANENT EASEMENT</td> <td></td> <td>PA HG3 400.00</td> <td></td> <td>LINE LIST NUMBER</td> </tr> <tr> <td></td> <td>TEMPORARY WORKSPACE</td> <td></td> <td>ADDITIONAL TEMPORARY WORKSPACE (ATWS)</td> <td></td> <td>POTENTIAL STAGING AREA</td> <td></td> <td>PROPOSED PIPELINE</td> </tr> <tr> <td></td> <td>EXISTING TENNESSEE GAS PIPELINE</td> <td></td> <td>EXISTING FOREIGN PIPELINE</td> <td></td> <td>OVERHEAD POWER LINE</td> <td></td> <td>EXISTING FIBER OPTIC LINE</td> </tr> </table>		EXISTING PERMANENT EASEMENT		PROPOSED PERMANENT EASEMENT		PA HG3 400.00		LINE LIST NUMBER		TEMPORARY WORKSPACE		ADDITIONAL TEMPORARY WORKSPACE (ATWS)		POTENTIAL STAGING AREA		PROPOSED PIPELINE		EXISTING TENNESSEE GAS PIPELINE		EXISTING FOREIGN PIPELINE		OVERHEAD POWER LINE		EXISTING FIBER OPTIC LINE	<p><b>REFERENCE DRAWINGS</b></p> <p><b>TYPICALS</b></p>	<p><b>REVISIONS</b></p> <table border="1"> <thead> <tr> <th>NO</th> <th>PROJ ID</th> <th>DESCRIPTION</th> <th>DATE</th> <th>BY</th> <th>CK</th> <th>APPR</th> </tr> </thead> <tbody> <tr> <td>0</td> <td></td> <td>ISSUE FOR FERC</td> <td>11/2015</td> <td>HMM</td> <td>HMM</td> <td></td> </tr> </tbody> </table>	NO	PROJ ID	DESCRIPTION	DATE	BY	CK	APPR	0		ISSUE FOR FERC	11/2015	HMM	HMM		<table border="1"> <tr> <td>AREA:</td> <td>DIV.:</td> </tr> <tr> <td>DRAFTER: HMM</td> <td>DATE: 01-12-15</td> </tr> <tr> <td>COORD.:</td> <td>DATE: 01-12-15</td> </tr> </table> <p align="center"> <b>Tennessee Gas Pipeline Company, L.L.C.</b>  <small>a Kinder Morgan company</small> </p> <p align="center"> <b>NORTHEAST ENERGY DIRECT PROJECT</b>  <b>PROPOSED 24" PIPELINE</b>  <b>SEGMENT N LYNNFIELD LATERAL</b>  <b>EROSION &amp; SEDIMENT CONTROL PLAN</b>  <b>ALIGNMENT SHEET</b>  <b>MIDDLESEX &amp; ESSEX COUNTY, MASSACHUSETTS</b> </p> <table border="1"> <tr> <td>DESIGN COORD.:</td> <td>DATE:</td> <td>SCALE: 1 = 200'</td> <td>PROJ. ID.:</td> </tr> <tr> <td>PROJECT COORD.:</td> <td>DATE:</td> <td></td> <td></td> </tr> <tr> <td>OPER. APPR.:</td> <td>DATE:</td> <td></td> <td></td> </tr> </table> <p align="right"> <b>E&amp;S_TE-SEG_N-010</b>    0         </p>	AREA:	DIV.:	DRAFTER: HMM	DATE: 01-12-15	COORD.:	DATE: 01-12-15	DESIGN COORD.:	DATE:	SCALE: 1 = 200'	PROJ. ID.:	PROJECT COORD.:	DATE:			OPER. APPR.:	DATE:		
	EXISTING PERMANENT EASEMENT		PROPOSED PERMANENT EASEMENT		PA HG3 400.00		LINE LIST NUMBER																																																					
	TEMPORARY WORKSPACE		ADDITIONAL TEMPORARY WORKSPACE (ATWS)		POTENTIAL STAGING AREA		PROPOSED PIPELINE																																																					
	EXISTING TENNESSEE GAS PIPELINE		EXISTING FOREIGN PIPELINE		OVERHEAD POWER LINE		EXISTING FIBER OPTIC LINE																																																					
NO	PROJ ID	DESCRIPTION	DATE	BY	CK	APPR																																																						
0		ISSUE FOR FERC	11/2015	HMM	HMM																																																							
AREA:	DIV.:																																																											
DRAFTER: HMM	DATE: 01-12-15																																																											
COORD.:	DATE: 01-12-15																																																											
DESIGN COORD.:	DATE:	SCALE: 1 = 200'	PROJ. ID.:																																																									
PROJECT COORD.:	DATE:																																																											
OPER. APPR.:	DATE:																																																											

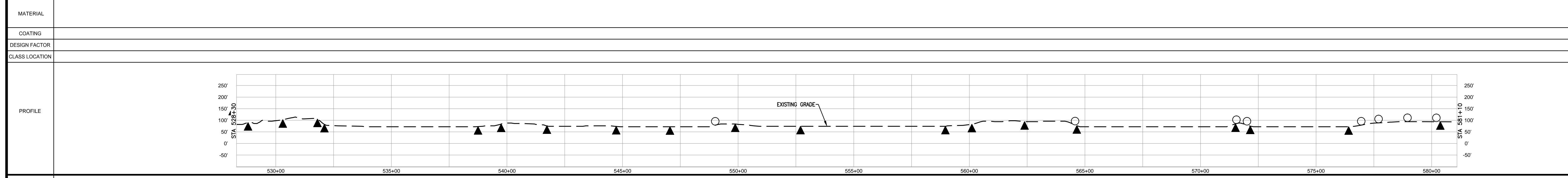
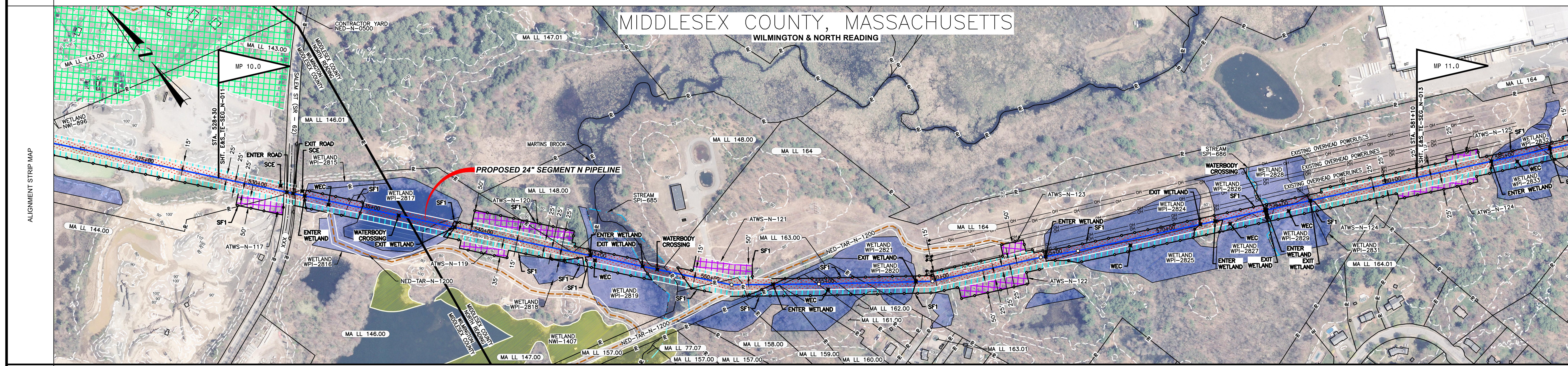
PROTECTION EASEMENT																																					
LINE LIST	<table border="1"> <tr> <td>475+50</td> <td>MA LL 136.00</td> </tr> <tr> <td>477+41</td> <td>MA LL 137.00</td> </tr> <tr> <td>480+82</td> <td>MA LL 138.00</td> </tr> <tr> <td>481+23</td> <td>MA LL 139.00</td> </tr> <tr> <td>482+33</td> <td>MA LL 140.00</td> </tr> <tr> <td>489+75</td> <td>MA LL 141.00</td> </tr> <tr> <td>499+01</td> <td>MA LL 142.01</td> </tr> <tr> <td>499+84</td> <td>MA LL 142.01</td> </tr> <tr> <td>503+88</td> <td>MA LL 142.00</td> </tr> <tr> <td>505+02</td> <td>MA LL 142.01</td> </tr> <tr> <td>505+84</td> <td>MA LL 142.01</td> </tr> <tr> <td>505+88</td> <td>MA LL 142.02</td> </tr> <tr> <td>507+17</td> <td>MA LL 142.00</td> </tr> <tr> <td>511+23</td> <td>MA LL 142.00</td> </tr> <tr> <td>511+46</td> <td>MA LL 143.00</td> </tr> <tr> <td>522+30</td> <td>EXISTING STRUCTURE</td> </tr> <tr> <td>522+36</td> <td>EXISTING STRUCTURE</td> </tr> <tr> <td>528+30</td> <td></td> </tr> </table>	475+50	MA LL 136.00	477+41	MA LL 137.00	480+82	MA LL 138.00	481+23	MA LL 139.00	482+33	MA LL 140.00	489+75	MA LL 141.00	499+01	MA LL 142.01	499+84	MA LL 142.01	503+88	MA LL 142.00	505+02	MA LL 142.01	505+84	MA LL 142.01	505+88	MA LL 142.02	507+17	MA LL 142.00	511+23	MA LL 142.00	511+46	MA LL 143.00	522+30	EXISTING STRUCTURE	522+36	EXISTING STRUCTURE	528+30	
475+50	MA LL 136.00																																				
477+41	MA LL 137.00																																				
480+82	MA LL 138.00																																				
481+23	MA LL 139.00																																				
482+33	MA LL 140.00																																				
489+75	MA LL 141.00																																				
499+01	MA LL 142.01																																				
499+84	MA LL 142.01																																				
503+88	MA LL 142.00																																				
505+02	MA LL 142.01																																				
505+84	MA LL 142.01																																				
505+88	MA LL 142.02																																				
507+17	MA LL 142.00																																				
511+23	MA LL 142.00																																				
511+46	MA LL 143.00																																				
522+30	EXISTING STRUCTURE																																				
522+36	EXISTING STRUCTURE																																				
528+30																																					
PIPELINE STATIONING	<p>477+41 PROPERTY LINE</p> <p>478+87 P.L. = 12' 46.35' R/L</p> <p>480+82 WATER GATE 14" LT.</p> <p>480+74 E OF ANOVER ST.</p> <p>480+76 UTILITY POLE 177' LT.</p> <p>480+82 PROPERTY LINE</p> <p>480+87 EDGE OF PAVEMENT</p> <p>481+15 EDGE OF PAVEMENT</p> <p>481+18 OVERHEAD POWER LINE</p> <p>481+23 PROPERTY LINE</p> <p>481+24 UTILITY POLE 44' RT.</p> <p>481+25 UTILITY POLE 45' RT.</p> <p>482+33 PROPERTY LINE</p> <p>483+51 EDGE OF WETLAND</p> <p>488+62 EDGE OF WETLAND</p> <p>490+75 PROPERTY LINE</p> <p>492+42 EDGE OF WETLAND</p> <p>494+29 EDGE OF WETLAND</p> <p>498+01 PROPERTY LINE</p> <p>498+09 EDGE OF WETLAND</p> <p>498+84 PROPERTY LINE</p> <p>501+77 P.L. = 45' 00.00' LT.</p> <p>503+88 PROPERTY LINE</p> <p>503+89 EDGE OF WETLAND</p> <p>505+02 PROPERTY LINE</p> <p>505+84 P.L. = 79' 25.10' R/L</p> <p>506+84 EDGE OF WETLAND</p> <p>507+02 EDGE OF WETLAND</p> <p>507+17 PROPERTY LINE</p> <p>507+18 PROPERTY LINE</p> <p>508+38 EDGE OF WETLAND</p> <p>510+87 EDGE OF STREAM</p> <p>510+94 EDGE OF WETLAND</p> <p>511+23 PROPERTY LINE</p> <p>511+41 EDGE OF STREAM</p> <p>511+44 EDGE OF WETLAND</p> <p>511+45 PROPERTY LINE</p> <p>512+20 EDGE OF WETLAND</p> <p>514+79 EDGE OF WETLAND</p> <p>515+14 EDGE OF WETLAND</p>																																				



MATERIAL	
COATING	
DESIGN FACTOR	
CLASS LOCATION	
ENVIRONMENTAL	
SOILS	

<p><b>PROFILE LEGEND</b></p> <p>SLOPE BREAKERS ○</p> <p>TRENCH PLUG ▲</p>	<p><b>LEGEND</b></p> <table border="1"> <tr> <td>EXISTING PERMANENT EASEMENT</td> <td>PA HG3 400.00</td> <td>LINE LIST NUMBER</td> </tr> <tr> <td>PROPOSED PERMANENT EASEMENT</td> <td>—R—</td> <td>PROPERTY LINE</td> </tr> <tr> <td>TEMPORARY WORKSPACE</td> <td>—M—</td> <td>MUNICIPAL LINE</td> </tr> <tr> <td>ADDITIONAL TEMPORARY WORKSPACE (ATWS)</td> <td>—W—</td> <td>WETLAND (PUBLIC)</td> </tr> <tr> <td>POTENTIAL STAGING AREA</td> <td>—P—</td> <td>WETLAND (PHOTO INTERPRETED)</td> </tr> <tr> <td>PROPOSED PIPELINE</td> <td>—S—</td> <td>WETLAND (DELINEATED)</td> </tr> <tr> <td>EXISTING TENNESSEE GAS PIPELINE</td> <td>—D—</td> <td>STREAM (DELINEATED)</td> </tr> <tr> <td>EXISTING FOREIGN PIPELINE</td> <td>—PH—</td> <td>STREAM (PHOTO INTERPRETED)</td> </tr> <tr> <td>OVERHEAD POWER LINE</td> <td>—A—</td> <td>ACCESS ROAD</td> </tr> <tr> <td>EXISTING FIBER OPTIC LINE</td> <td>—F—</td> <td>FENCE LINE</td> </tr> </table>	EXISTING PERMANENT EASEMENT	PA HG3 400.00	LINE LIST NUMBER	PROPOSED PERMANENT EASEMENT	—R—	PROPERTY LINE	TEMPORARY WORKSPACE	—M—	MUNICIPAL LINE	ADDITIONAL TEMPORARY WORKSPACE (ATWS)	—W—	WETLAND (PUBLIC)	POTENTIAL STAGING AREA	—P—	WETLAND (PHOTO INTERPRETED)	PROPOSED PIPELINE	—S—	WETLAND (DELINEATED)	EXISTING TENNESSEE GAS PIPELINE	—D—	STREAM (DELINEATED)	EXISTING FOREIGN PIPELINE	—PH—	STREAM (PHOTO INTERPRETED)	OVERHEAD POWER LINE	—A—	ACCESS ROAD	EXISTING FIBER OPTIC LINE	—F—	FENCE LINE	<p><b>REFERENCE DRAWINGS</b></p> <p>TYPICALS</p>	<p><b>REVISIONS</b></p> <table border="1"> <tr> <th>NO</th> <th>PROJ ID</th> <th>DESCRIPTION</th> <th>DATE</th> <th>BY</th> <th>CK</th> <th>APPR</th> </tr> <tr> <td>0</td> <td></td> <td>ISSUE FOR FERC</td> <td>11/2015</td> <td>HMM</td> <td>HMM</td> <td></td> </tr> </table>	NO	PROJ ID	DESCRIPTION	DATE	BY	CK	APPR	0		ISSUE FOR FERC	11/2015	HMM	HMM		<p><b>NOTES</b></p> <ol style="list-style-type: none"> <li>EXISTING TENNESSEE GAS PIPELINE PERMANENT EASEMENTS ARE NOT DEPICTED IN THEIR ENTIRETY.</li> <li>PUBLIC WETLANDS ARE OBTAINED FROM THE NATIONAL WETLAND INVENTORY (NWI) (AS DEFINED IN RESOURCE REPORT 2.3)</li> <li>PUBLIC STREAMS ARE OBTAINED FROM THE NATIONAL HYDROGRAPHY DATASET. (NHD) (AS DEFINED IN RESOURCE REPORT 2.2)</li> <li>PHOTO INTERPRETED WETLANDS AND STREAMS ARE A RESULT OF A HIGH RESOLUTION PHOTOGRAPHIC INTERPOLATION.</li> <li>DELINEATED WETLANDS AND STREAMS ARE THE RESULT OF AN ENVIRONMENTAL GROUND SURVEY.</li> <li>PROPERTY LINES ARE BASED ON TAX MAPS AND ARE NOT THE RESULT OF A FULL BOUNDARY SURVEY.</li> <li>TRENCH PLUGS SHALL BE INSTALLED AT ALL ROAD CROSSINGS AS DIRECTED BY THE ENVIRONMENTAL INSPECTOR.</li> <li>PERMANENT SLOPE BREAKERS SHOWN IN CULTIVATED AREAS AND LAWNS SHALL ONLY BE INSTALLED WITH THE LANDOWNER'S PERMISSION.</li> </ol>	<p><b>SCALE</b></p> <p>200 100 0 200 400</p> <p>IMAGERY: APRIL/MAY 2015</p>	<p><b>AREA:</b></p> <p>DRAFTER: HMM</p> <p>COORD: HMM</p> <p><b>REVISIONS</b></p> <p>DATE: 01-12-15</p> <p>DATE: 01-12-15</p>	<p><b>Tennessee Gas Pipeline Company, L.L.C.</b></p> <p>a Kinder Morgan company</p> <p><b>NORTHEAST ENERGY DIRECT PROJECT</b></p> <p><b>PROPOSED 24" PIPELINE</b></p> <p><b>SEGMENT N LYNNFIELD LATERAL</b></p> <p><b>EROSION &amp; SEDIMENT CONTROL PLAN</b></p> <p><b>ALIGNMENT SHEET</b></p> <p><b>MIDDLESEX &amp; ESSEX COUNTY, MASSACHUSETTS</b></p> <p>DESIGN COORD: DATE: SCALE: 1 = 200' PROJ. ID: E&amp;S_TE-SEG_N-011</p> <p>PROJECT COORD: DATE: 0</p> <p>OPER. APPR: DATE:</p>
EXISTING PERMANENT EASEMENT	PA HG3 400.00	LINE LIST NUMBER																																																	
PROPOSED PERMANENT EASEMENT	—R—	PROPERTY LINE																																																	
TEMPORARY WORKSPACE	—M—	MUNICIPAL LINE																																																	
ADDITIONAL TEMPORARY WORKSPACE (ATWS)	—W—	WETLAND (PUBLIC)																																																	
POTENTIAL STAGING AREA	—P—	WETLAND (PHOTO INTERPRETED)																																																	
PROPOSED PIPELINE	—S—	WETLAND (DELINEATED)																																																	
EXISTING TENNESSEE GAS PIPELINE	—D—	STREAM (DELINEATED)																																																	
EXISTING FOREIGN PIPELINE	—PH—	STREAM (PHOTO INTERPRETED)																																																	
OVERHEAD POWER LINE	—A—	ACCESS ROAD																																																	
EXISTING FIBER OPTIC LINE	—F—	FENCE LINE																																																	
NO	PROJ ID	DESCRIPTION	DATE	BY	CK	APPR																																													
0		ISSUE FOR FERC	11/2015	HMM	HMM																																														

PROTECTION EASEMENT																																			
LINE LIST	<table border="1"> <tr> <td>528+30</td> <td>MA LL 143.00</td> </tr> <tr> <td>531+19</td> <td>XXX</td> </tr> <tr> <td>531+70</td> <td>MA LL 146.00</td> </tr> <tr> <td>536+59</td> <td></td> </tr> <tr> <td></td> <td>MA LL 147.00</td> </tr> <tr> <td>541+88</td> <td>MA LL 148.00</td> </tr> <tr> <td>544+00</td> <td>MA LL 147.00</td> </tr> <tr> <td>546+17</td> <td>MA LL 164</td> </tr> <tr> <td>550+40</td> <td>MA LL 157.00</td> </tr> <tr> <td>551+44</td> <td>MA LL 164</td> </tr> <tr> <td>553+15</td> <td></td> </tr> <tr> <td>554+89</td> <td>MA LL 161.00</td> </tr> <tr> <td>554+89</td> <td>MA LL 162.00</td> </tr> <tr> <td>555+57</td> <td>MA LL 163.00</td> </tr> <tr> <td>556+78</td> <td></td> </tr> <tr> <td></td> <td>MA LL 164.00</td> </tr> <tr> <td>581+10</td> <td></td> </tr> </table>	528+30	MA LL 143.00	531+19	XXX	531+70	MA LL 146.00	536+59			MA LL 147.00	541+88	MA LL 148.00	544+00	MA LL 147.00	546+17	MA LL 164	550+40	MA LL 157.00	551+44	MA LL 164	553+15		554+89	MA LL 161.00	554+89	MA LL 162.00	555+57	MA LL 163.00	556+78			MA LL 164.00	581+10	
528+30	MA LL 143.00																																		
531+19	XXX																																		
531+70	MA LL 146.00																																		
536+59																																			
	MA LL 147.00																																		
541+88	MA LL 148.00																																		
544+00	MA LL 147.00																																		
546+17	MA LL 164																																		
550+40	MA LL 157.00																																		
551+44	MA LL 164																																		
553+15																																			
554+89	MA LL 161.00																																		
554+89	MA LL 162.00																																		
555+57	MA LL 163.00																																		
556+78																																			
	MA LL 164.00																																		
581+10																																			
PIPELINE STATIONING	<p>531+15 &amp; SALEM ST (SR - 62)  531+19 PROPERTY LINE  531+52 EDGE OF PAVEMENT  531+62 UTILITY POLE 33' LT.  531+65 GUARD RAIL  531+65 OVERHEAD POWER LINE  531+67 PROPERTY LINE  531+77 UTILITY POLE 192' RT.  532+11 EDGE OF WETLAND  534+04 EDGE OF WETLAND  534+64 EDGE OF WETLAND</p> <p>536+59 PROPERTY LINE  536+64 MUNICIPAL LINE</p> <p>537+97 EDGE OF WETLAND  538+74 EDGE OF WETLAND</p> <p>543+88 PROPERTY LINE  544+00 PROPERTY LINE  544+74 EDGE OF WETLAND</p> <p>547+04 EDGE OF STREAM  547+04 EDGE OF WETLAND  548+17 PROPERTY LINE  548+42 EDGE OF STREAM</p> <p>550+40 PROPERTY LINE  <b>550+88 P.L. = 121200' LT.</b>  551+44 PROPERTY LINE</p> <p>552+76 EDGE OF WETLAND  553+15 PROPERTY LINE</p> <p><b>554+89 PROPERTY LINE</b>  <b>554+89 P.L. = 27850' RT.</b></p> <p>555+57 PROPERTY LINE  556+78 PROPERTY LINE</p> <p>558+94 EDGE OF WETLAND  <b>558+94 P.L. = 110800' LT.</b></p> <p><b>564+48 P.L. = 27850' RT.</b>  564+88 EDGE OF WETLAND</p> <p><b>566+08 P.L. = 27200' LT.</b></p> <p>571+51 EDGE OF WETLAND  572+17 EDGE OF WETLAND</p> <p>574+37 EDGE OF STREAM  574+37 EDGE OF WETLAND  574+44 EDGE OF STREAM  574+77 EDGE OF WETLAND  576+33 EDGE OF WETLAND  576+38 EDGE OF WETLAND</p>																																		



MATERIAL	
COATING	
DESIGN FACTOR	
CLASS LOCATION	
ENVIRONMENTAL	
SOILS	

**PROFILE LEGEND**

- SLOPE BREAKERS
- TRENCH PLUG

**NOTES**

- EXISTING TENNESSEE GAS PIPELINE PERMANENT EASEMENTS ARE NOT DEPICTED IN THEIR ENTIRETY.
- PUBLIC WETLANDS ARE OBTAINED FROM THE NATIONAL WETLAND INVENTORY (NWI) (AS DEFINED IN RESOURCE REPORT 2.3)
- PUBLIC STREAMS ARE OBTAINED FROM THE NATIONAL HYDROGRAPHY DATASET. (NHD) (AS DEFINED IN RESOURCE REPORT 2.2)
- PHOTO INTERPRETED WETLANDS AND STREAMS ARE A RESULT OF A HIGH RESOLUTION PHOTOGRAPHIC INTERPOLATION.
- DELINEATED WETLANDS AND STREAMS ARE THE RESULT OF AN ENVIRONMENTAL GROUND SURVEY.
- PROPERTY LINES ARE BASED ON TAX MAPS AND ARE NOT THE RESULT OF A FULL BOUNDARY SURVEY.
- TRENCH PLUGS SHALL BE INSTALLED AT ALL ROAD CROSSINGS AS DIRECTED BY THE ENVIRONMENTAL INSPECTOR.
- PERMANENT SLOPE BREAKERS SHOWN IN CULTIVATED AREAS AND LAWNS SHALL ONLY BE INSTALLED WITH THE LANDOWNER'S PERMISSION.

**LEGEND**

EXISTING PERMANENT EASEMENT	PA HG3 400.00	LINE LIST NUMBER
PROPOSED PERMANENT EASEMENT		PROPERTY LINE
TEMPORARY WORKSPACE		MUNICIPAL LINE
ADDITIONAL TEMPORARY WORKSPACE (ATWS)		WETLAND (PUBLIC)
POTENTIAL STAGING AREA		WETLAND (PHOTO INTERPRETED)
PROPOSED PIPELINE		WETLAND (DELINEATED)
EXISTING TENNESSEE GAS PIPELINE		STREAM (DELINEATED)
EXISTING FOREIGN PIPELINE		STREAM (PHOTO INTERPRETED)
OVERHEAD POWER LINE		STREAM (PUBLIC)
EXISTING FIBER OPTIC LINE		ACCESS ROAD
		FENCE LINE

**REFERENCE DRAWINGS**

TYPICALS

**REVISIONS**

NO	PROJ ID	DESCRIPTION	DATE	BY	CK	APPR
0		ISSUE FOR FERC	11/2015	HMM	HMM	

**SCALE**

200 100 0 200 400

IMAGERY: APRIL/MAY 2015

**AREA:** DIV:

DRAFTER: HMM DATE: 01-12-15

DRAFT: HMM DATE: 01-12-15

COORD: HMM

**Tennessee Gas Pipeline Company, L.L.C.**  
a Kinder Morgan company

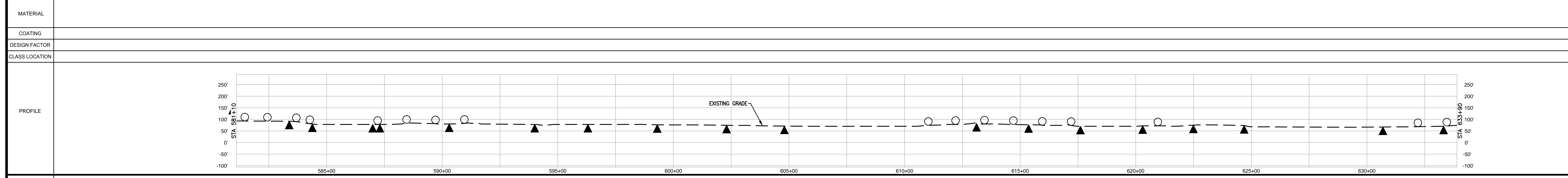
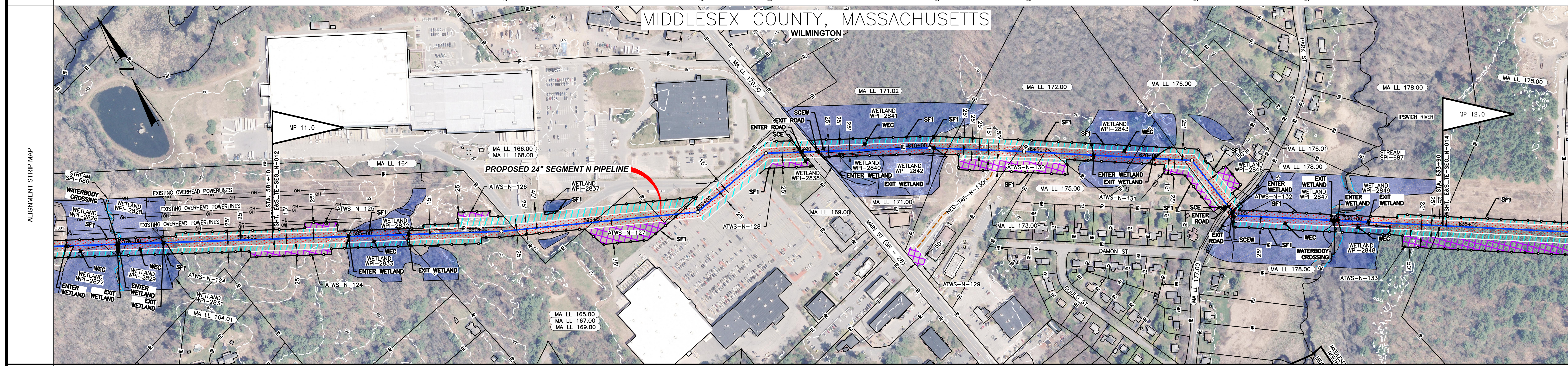
**NORTHEAST ENERGY DIRECT PROJECT**  
**PROPOSED 24" PIPELINE**  
**SEGMENT N LYNNFIELD LATERAL**  
**EROSION & SEDIMENT CONTROL PLAN**  
**ALIGNMENT SHEET**  
**MIDDLESEX COUNTY, MASSACHUSETTS**

DESIGN COORD: DATE: SCALE: 1 = 200' PROJ. ID: E&S\_TE-SEG\_N-012 0

PROJECT COORD: DATE: 0

OPER. APPR: DATE: 0

PROTECTION EASEMENT	LINE LIST	PIPELINE STATIONING
	MA LL 164	584+39 EDGE OF WETLAND
	MA LL 165.00 MA LL 167.00 MA LL 169.00	586+69 PROPERTY LINE 586+98 EDGE OF WETLAND
	MA LL 166.00 MA LL 168.00	591+63
	MA LL 165.00 MA LL 167.00 MA LL 169.00	595+00
	MA LL 166.00 MA LL 168.00	597+83
	MA LL 165.00 MA LL 167.00 MA LL 169.00	598+50
	MA LL 170.00	598+50
	MA LL 171.02	604+83 OVERHEAD POWER LINE 604+88 E OF MAIN ST (SR - 28)
	MA LL 171.00	604+89 PROPERTY LINE 605+89 EDGE OF WETLAND 605+91 EDGE OF WETLAND 605+79 PROPERTY LINE
	MA LL 171.02	608+52 PROPERTY LINE
	MA LL 172.00	611+33
	MA LL 173.00	614+34
	MA LL 172.00	615+07
	MA LL 175.00	614+34 PROPERTY LINE 614+37 PROPERTY LINE 615+50 PROPERTY LINE 615+85 PROPERTY LINE
	MA LL 175.00	617+62 EDGE OF WETLAND
	MA LL 172.00	619+38 PROPERTY LINE
	MA LL 175.00	620+22 EDGE OF WETLAND
	MA LL 175.00	621+54 PROPERTY LINE 621+58 P.L. - 48' 0" ST. LT.
	MA LL 177.00	624+31
	MA LL 176.00	624+31 PROPERTY LINE 624+31 E PARK ST 624+69 EDGE OF WETLAND 624+70 UTILITY POLE 37' LT. 624+72 EDGE OF PAVEMENT 624+72 PROPERTY LINE 624+80 WATER GATE 15' RT. 624+82 UTILITY POLE 19' RT. 624+82 UTILITY POLE 73' RT. 624+82 P.L. - 48' 0" ST. LT. 625+81 UTILITY POLE 131' LT.
	MA LL 178.00	629+10 EDGE OF STREAM 629+10 EDGE OF WETLAND 629+19 PROPERTY LINE 629+37 EDGE OF WETLAND 630+69 EDGE OF WETLAND
	MA LL 178.00	633+80 PROPERTY LINE



ENVIRONMENTAL	SOILS

**NOTES**

- EXISTING TENNESSEE GAS PIPELINE PERMANENT EASEMENTS ARE NOT DEPICTED IN THEIR ENTIRETY.
- PUBLIC WETLANDS ARE OBTAINED FROM THE NATIONAL WETLAND INVENTORY (NWI) (AS DEFINED IN RESOURCE REPORT 2.3)
- PUBLIC STREAMS ARE OBTAINED FROM THE NATIONAL HYDROGRAPHY DATASET. (NHD) (AS DEFINED IN RESOURCE REPORT 2.2)
- PHOTO INTERPRETED WETLANDS AND STREAMS ARE A RESULT OF A HIGH RESOLUTION PHOTOGRAPHIC INTERPOLATION.
- DELINEATED WETLANDS AND STREAMS ARE THE RESULT OF AN ENVIRONMENTAL GROUND SURVEY.
- PROPERTY LINES ARE BASED ON TAX MAPS AND ARE NOT THE RESULT OF A FULL BOUNDARY SURVEY.
- TRENCH PEGS SHALL BE INSTALLED AT ALL ROAD CROSSINGS AS DIRECTED BY THE ENVIRONMENTAL INSPECTOR.
- PERMANENT SLOPE BREAKERS SHOWN IN CULTIVATED AREAS AND LAWNS SHALL ONLY BE INSTALLED WITH THE LANDOWNER'S PERMISSION.

**LEGEND**

EXISTING PERMANENT EASEMENT	PROPOSED PERMANENT EASEMENT	TEMPORARY WORKSPACE	ADDITIONAL TEMPORARY WORKSPACE (ATWS)	POTENTIAL STAGING AREA	PROPOSED PIPELINE	EXISTING TENNESSEE GAS PIPELINE	EXISTING FOREIGN PIPELINE	OVERHEAD POWER LINE	EXISTING FIBER OPTIC LINE
-----------------------------	-----------------------------	---------------------	---------------------------------------	------------------------	-------------------	---------------------------------	---------------------------	---------------------	---------------------------

**PROFILE LEGEND**

SLOPE BREAKERS

TRENCH PLUG

**REFERENCE DRAWINGS**

TYPICALS

**REVISIONS**

NO	PROJ ID	DESCRIPTION	DATE	BY	CK	APPR
0		ISSUE FOR FERC	11/2015	HMM	HMM	

**AREA:** DIV:

DRAFTER: HMM DATE: 01-12-15

DRAFT: HMM DATE: 01-12-15

COORD: HMM

**Tennessee Gas Pipeline Company, L.L.C.**  
a Kinder Morgan company

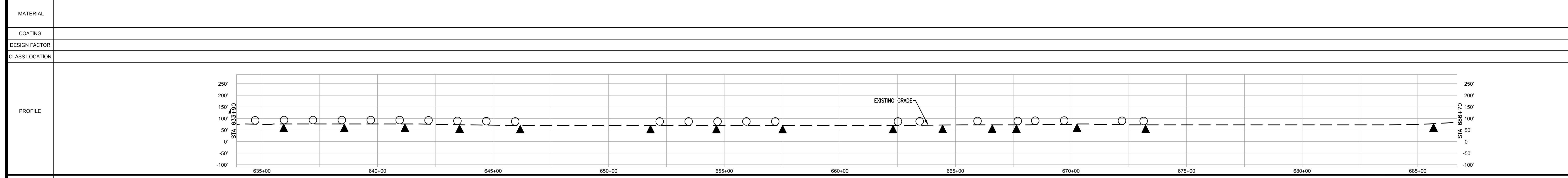
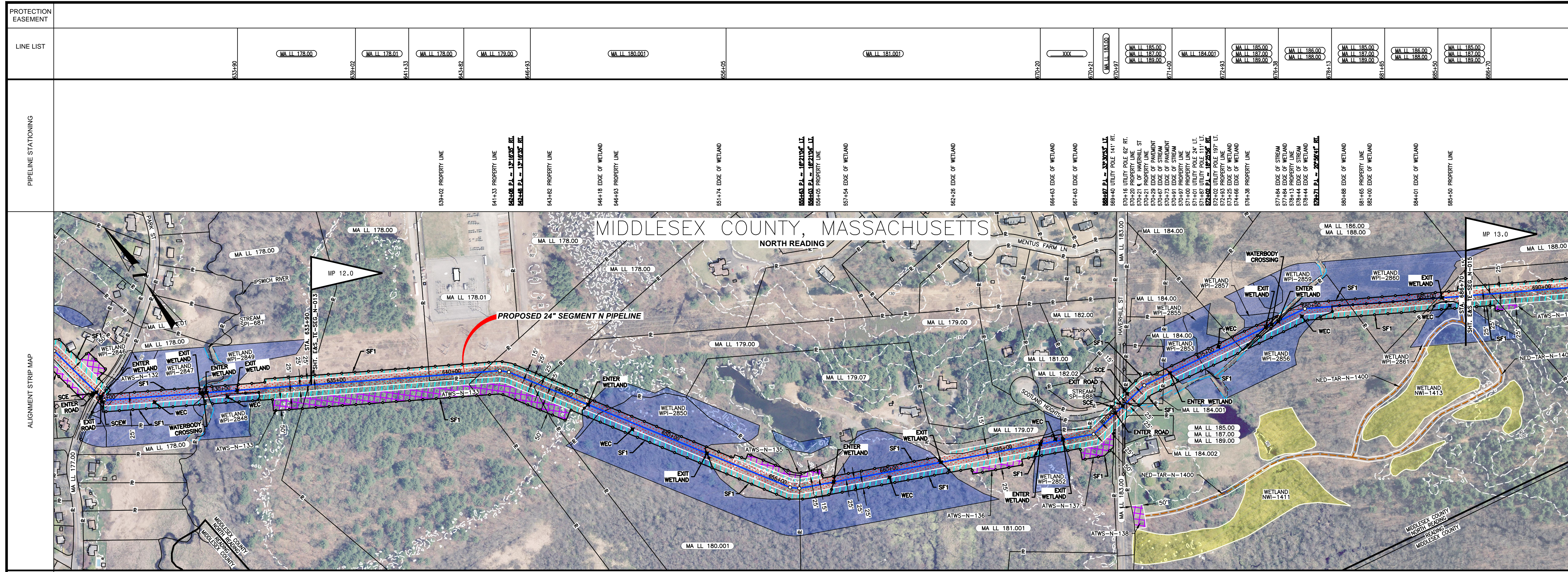
**NORTHEAST ENERGY DIRECT PROJECT**  
**PROPOSED 24" PIPELINE**  
**SEGMENT N LYNNFIELD LATERAL**  
**EROSION & SEDIMENT CONTROL PLAN**  
**ALIGNMENT SHEET**  
**MIDDLESEX COUNTY, MASSACHUSETTS**

DESIGN COORD: DATE: SCALE: 1 = 200' PROJ. ID: E&S\_TE-SEG\_N-013

PROJECT COORD: DATE: 0

OPER. APPR: DATE:

11/2015 8:00 PM HMM



ENVIRONMENTAL	
SOILS	

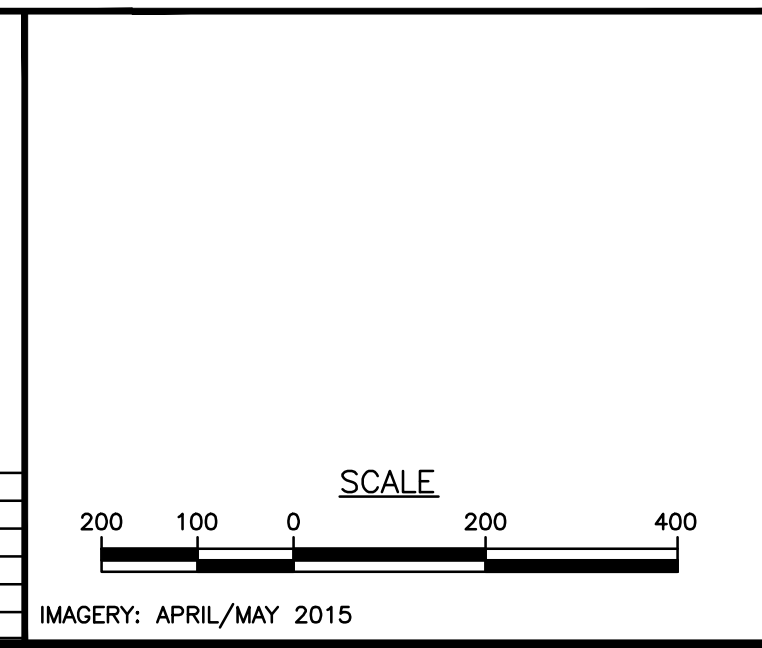
- NOTES**
- EXISTING TENNESSEE GAS PIPELINE PERMANENT EASEMENTS ARE NOT DEPICTED IN THEIR ENTIRETY.
  - PUBLIC WETLANDS ARE OBTAINED FROM THE NATIONAL WETLAND INVENTORY (NWI) (AS DEFINED IN RESOURCE REPORT 2.3).
  - PUBLIC STREAMS ARE OBTAINED FROM THE NATIONAL HYDROGRAPHY DATASET. (NHD). (AS DEFINED IN RESOURCE REPORT 2.2)
  - PHOTO INTERPRETED WETLANDS AND STREAMS ARE A RESULT OF A HIGH RESOLUTION PHOTOGRAPHIC INTERPOLATION.
  - DELINEATED WETLANDS AND STREAMS ARE THE RESULT OF AN ENVIRONMENTAL GROUND SURVEY.
  - PROPERTY LINES ARE BASED ON TAX MAPS AND ARE NOT THE RESULT OF A FULL BOUNDARY SURVEY.
  - TRENCH PLUGS SHALL BE INSTALLED AT ALL ROAD CROSSINGS AS DIRECTED BY THE ENVIRONMENTAL INSPECTOR.
  - PERMANENT SLOPE BREAKERS SHOWN IN CULTIVATED AREAS AND LAWNS SHALL ONLY BE INSTALLED WITH THE LANDOWNER'S PERMISSION.

**LEGEND**

EXISTING PERMANENT EASEMENT	PROPOSED PERMANENT EASEMENT	TEMPORARY WORKSPACE	ADDITIONAL TEMPORARY WORKSPACE (ATWS)	POTENTIAL STAGING AREA	PROPOSED PIPELINE	EXISTING TENNESSEE GAS PIPELINE	EXISTING FOREIGN PIPELINE	OVERHEAD POWER LINE	EXISTING FIBER OPTIC LINE	
LIMITS OF DISTURBANCE	PROPERTY LINE	MUNICIPAL LINE	WETLAND (PUBLIC)	WETLAND (PHOTO INTERPRETED)	WETLAND (DELINEATED)	STREAM (DELINEATED)	STREAM (PHOTO INTERPRETED)	STREAM (PUBLIC)	ACCESS ROAD	FENCE LINE

**REFERENCE DRAWINGS**


**TYPICALS**

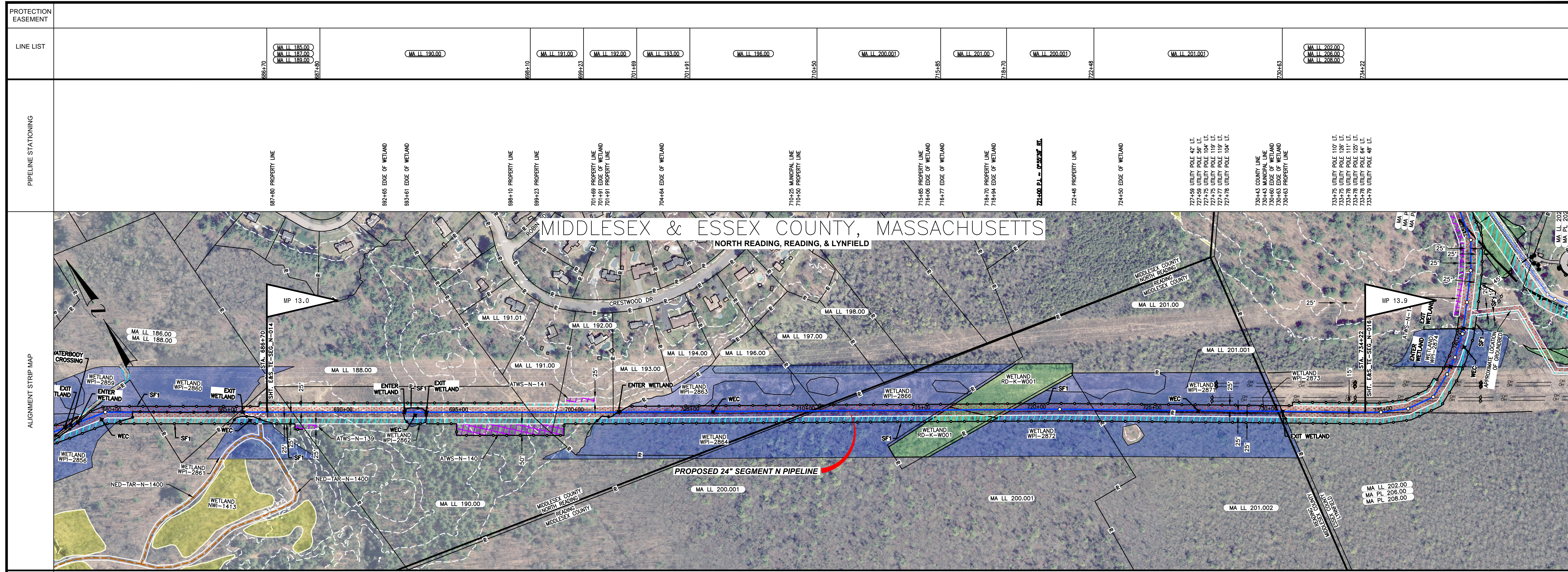
**REVISIONS**

NO	PROJ ID	DESCRIPTION	DATE	BY	CK	APPR
0		ISSUE FOR FER	11/2015	HMM	HMM	

**Tennessee Gas Pipeline Company, L.L.C.**  
a Kinder Morgan company

**NORTHEAST ENERGY DIRECT PROJECT  
PROPOSED 24" PIPELINE  
SEGMENT N LYNNFIELD LATERAL  
EROSION & SEDIMENT CONTROL PLAN  
ALIGNMENT SHEET  
MIDDLESEX COUNTY, MASSACHUSETTS**

AREA:	DIV.:	DATE:	SCALE:	PROJ. ID.:
DRAFTER: HMM		DATE: 01-12-15	1 = 200'	E&S_TE-SEG_N-014
DRAFT: HMM		DATE: 01-12-15		0
COORD: HMM		DATE:		
OPER: HMM		DATE:		
APPR: HMM		DATE:		

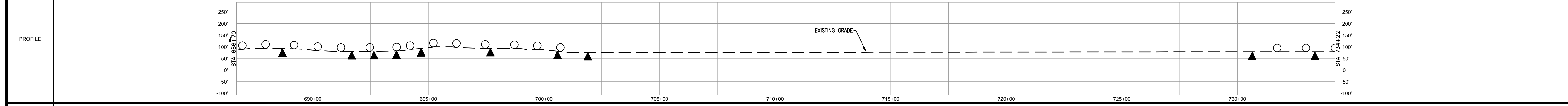


MATERIAL

COATING

DESIGN FACTOR

CLASS LOCATION



ENVIRONMENTAL

SOILS

**PROFILE LEGEND**

- SLOPE BREAKERS ○
- TRENCH PLUG ▲

- NOTES**
- EXISTING TENNESSEE GAS PIPELINE PERMANENT EASEMENTS ARE NOT DEPICTED IN THEIR ENTIRETY.
  - PUBLIC WETLANDS ARE OBTAINED FROM THE NATIONAL WETLAND INVENTORY (NWI) (AS DEFINED IN RESOURCE REPORT 2.3).
  - PUBLIC STREAMS ARE OBTAINED FROM THE NATIONAL HYDROGRAPHY DATASET. (NHD). (AS DEFINED IN RESOURCE REPORT 2.2)
  - PHOTO INTERPRETED WETLANDS AND STREAMS ARE A RESULT OF A HIGH RESOLUTION PHOTOGRAPHIC INTERPOLATION.
  - DELINEATED WETLANDS AND STREAMS ARE THE RESULT OF AN ENVIRONMENTAL GROUND SURVEY.
  - PROPERTY LINES ARE BASED ON TAX MAPS AND ARE NOT THE RESULT OF A FULL BOUNDARY SURVEY.
  - TRENCH PLUGS SHALL BE INSTALLED AT ALL ROAD CROSSINGS AS DIRECTED BY THE ENVIRONMENTAL INSPECTOR.
  - PERMANENT SLOPE BREAKERS SHOWN IN CULTIVATED AREAS AND LAWNS SHALL ONLY BE INSTALLED WITH THE LANDOWNER'S PERMISSION.

**LEGEND**

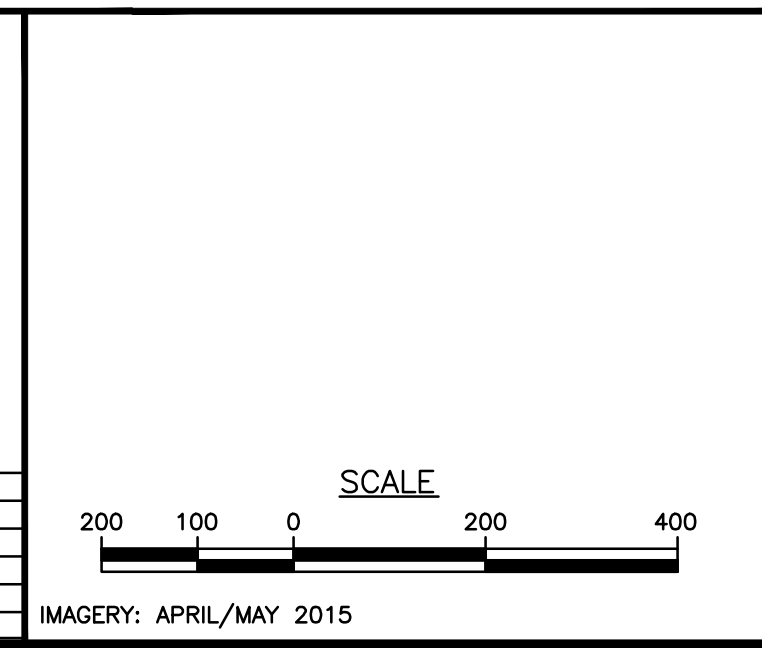
	EXISTING PERMANENT EASEMENT		PROPOSED PERMANENT EASEMENT		PROPOSED PIPELINE
	TEMPORARY WORKSPACE		ADDITIONAL TEMPORARY WORKSPACE (ATWS)		EXISTING TENNESSEE GAS PIPELINE
	POTENTIAL STAGING AREA		PROPOSED PIPELINE		EXISTING FOREIGN PIPELINE
	PROPOSED PIPELINE		EXISTING TENNESSEE GAS PIPELINE		OVERHEAD POWER LINE
	EXISTING TENNESSEE GAS PIPELINE		EXISTING FOREIGN PIPELINE		EXISTING FIBER OPTIC LINE

**LIMITS OF DISTURBANCE**

	PA HG3 400.00		LINE LIST NUMBER
	PROPERTY LINE		MUNICIPAL LINE
	WETLAND (PUBLIC)		WETLAND (PHOTO INTERPRETED)
	WETLAND (DELINEATED)		STREAM (DELINEATED)
	STREAM (DELINEATED)		STREAM (PHOTO INTERPRETED)
	STREAM (PHOTO INTERPRETED)		ACCESS ROAD
	ACCESS ROAD		FENCE LINE

**REFERENCE DRAWINGS**


**TYPICALS**



**REVISIONS**

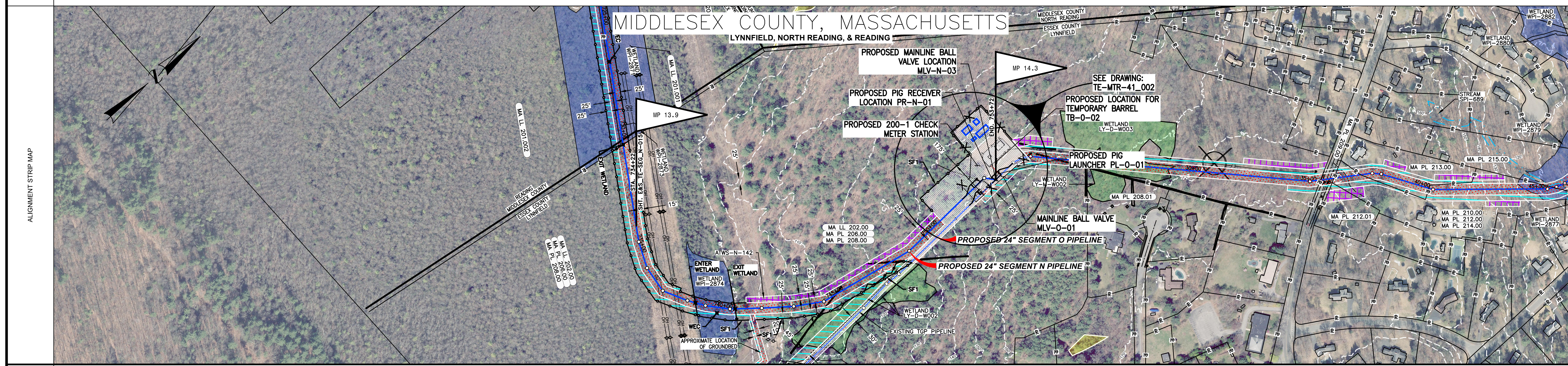
NO	PROJ ID	DESCRIPTION	DATE	BY	CK	APPR
0		ISSUE FOR FER	11/2015	HMM	HMM	

**Tennessee Gas Pipeline Company, L.L.C.**  
a Kinder Morgan company

**NORTHEAST ENERGY DIRECT PROJECT  
PROPOSED 24" PIPELINE  
SEGMENT N LYNNFIELD LATERAL  
EROSION & SEDIMENT CONTROL PLAN  
ALIGNMENT SHEET  
MIDDLESEX COUNTY, MASSACHUSETTS**

AREA:	DIV.:	DATE:	SCALE:	PROJ. ID.:
DRAFTER: HMM		01-12-15	1 = 200'	E&S_TE-SEG_N-015
DRAW. COORD: HMM		DATE:		0
DESIGN COORD:		DATE:		
PROJECT COORD:		DATE:		
OPER. APPR:		DATE:		

PROTECTION EASEMENT	
LINE LIST	<p>MA LL 202.00 MA LL 206.00 MA LL 208.00</p>
PIPELINE STATIONING	<p>7344+72 753+72</p>

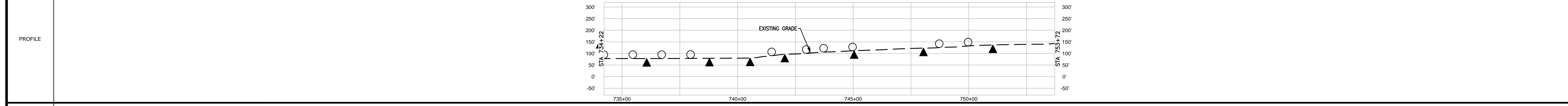


MATERIAL	
----------	--

COATING	
---------	--

DESIGN FACTOR	
---------------	--

CLASS LOCATION	
----------------	--



ENVIRONMENTAL	
---------------	--

SOILS	
-------	--

<p><b>PROFILE LEGEND</b></p> <p>SLOPE BREAKERS ○</p> <p>TRENCH PLUG ▲</p>	
---	--

<p><b>NOTES</b></p> <ol style="list-style-type: none"> <li>EXISTING TENNESSEE GAS PIPELINE PERMANENT EASEMENTS ARE NOT DEPICTED IN THEIR ENTIRETY.</li> <li>PUBLIC WETLANDS ARE OBTAINED FROM THE NATIONAL WETLAND INVENTORY (NWI) (AS DEFINED IN RESOURCE REPORT 2.3)</li> <li>PUBLIC STREAMS ARE OBTAINED FROM THE NATIONAL HYDROGRAPHY DATASET. (NHD) (AS DEFINED IN RESOURCE REPORT 2.2)</li> <li>PHOTO INTERPRETED WETLANDS AND STREAMS ARE THE RESULT OF A HIGH RESOLUTION PHOTOGRAPHIC INTERPOLATION.</li> <li>DELINEATED WETLANDS AND STREAMS ARE THE RESULT OF AN ENVIRONMENTAL GROUND SURVEY.</li> <li>PROPERTY LINES ARE BASED ON TAX MAPS AND ARE NOT THE RESULT OF A FULL BOUNDARY SURVEY.</li> <li>TRENCH PLUGS SHALL BE INSTALLED AT ALL ROAD CROSSINGS AS DIRECTED BY THE ENVIRONMENTAL INSPECTOR.</li> <li>PERMANENT SLOPE BREAKERS SHOWN IN CULTIVATED AREAS AND LAWNS SHALL ONLY BE INSTALLED WITH THE LANDOWNER'S PERMISSION.</li> </ol>	<p><b>LEGEND</b></p> <table border="0"> <tr> <td></td> <td>EXISTING PERMANENT EASEMENT</td> <td></td> <td>PROPOSED PIPELINE</td> </tr> <tr> <td></td> <td>PROPOSED PERMANENT EASEMENT</td> <td></td> <td>EXISTING TENNESSEE GAS PIPELINE</td> </tr> <tr> <td></td> <td>TEMPORARY WORKSPACE</td> <td></td> <td>EXISTING FOREIGN PIPELINE</td> </tr> <tr> <td></td> <td>ADDITIONAL TEMPORARY WORKSPACE (ATWS)</td> <td></td> <td>OVERHEAD POWER LINE</td> </tr> <tr> <td></td> <td>POTENTIAL STAGING AREA</td> <td></td> <td>EXISTING FIBER OPTIC LINE</td> </tr> </table>		EXISTING PERMANENT EASEMENT		PROPOSED PIPELINE		PROPOSED PERMANENT EASEMENT		EXISTING TENNESSEE GAS PIPELINE		TEMPORARY WORKSPACE		EXISTING FOREIGN PIPELINE		ADDITIONAL TEMPORARY WORKSPACE (ATWS)		OVERHEAD POWER LINE		POTENTIAL STAGING AREA		EXISTING FIBER OPTIC LINE	<p><b>REFERENCE DRAWINGS</b></p> <p>TYPICALS</p>	<p><b>REVISIONS</b></p> <table border="1"> <thead> <tr> <th>NO</th> <th>PROJ ID</th> <th>DESCRIPTION</th> <th>DATE</th> <th>BY</th> <th>CK</th> <th>APPR</th> </tr> </thead> <tbody> <tr> <td>0</td> <td></td> <td>ISSUE FOR FERC</td> <td>11/2015</td> <td>HMM</td> <td>HMM</td> <td></td> </tr> </tbody> </table>	NO	PROJ ID	DESCRIPTION	DATE	BY	CK	APPR	0		ISSUE FOR FERC	11/2015	HMM	HMM		<p>AREA: _____ DIV: _____</p> <p>DRAFTER: HMM DATE: 01-12-15</p> <p>DRAFT. COORD: HMM DATE: 01-12-15</p> <p><b>Tennessee Gas Pipeline Company, L.L.C.</b> a Kinder Morgan company</p> <p><b>NORTHEAST ENERGY DIRECT PROJECT PROPOSED 24" PIPELINE SEGMENT N LYNNFIELD LATERAL EROSION &amp; SEDIMENT CONTROL PLAN ALIGNMENT SHEET MIDDLESEX COUNTY, MASSACHUSETTS</b></p> <p>DESIGN COORD: _____ DATE: _____ SCALE: 1 = 200' PROJ. ID.: E&amp;S_TE-SEG_N-016</p> <p>PROJECT COORD: _____ DATE: _____</p> <p>OPER. APPR: _____ DATE: _____</p>
			EXISTING PERMANENT EASEMENT		PROPOSED PIPELINE																																	
	PROPOSED PERMANENT EASEMENT		EXISTING TENNESSEE GAS PIPELINE																																			
	TEMPORARY WORKSPACE		EXISTING FOREIGN PIPELINE																																			
	ADDITIONAL TEMPORARY WORKSPACE (ATWS)		OVERHEAD POWER LINE																																			
	POTENTIAL STAGING AREA		EXISTING FIBER OPTIC LINE																																			
NO	PROJ ID	DESCRIPTION	DATE	BY	CK	APPR																																
0		ISSUE FOR FERC	11/2015	HMM	HMM																																	
<p><b>LEGEND</b></p> <table border="0"> <tr> <td></td> <td>PA HG3 400.00</td> <td></td> <td>LINE LIST NUMBER</td> </tr> <tr> <td></td> <td>PROPERTY LINE</td> <td></td> <td>WETLAND (PUBLIC)</td> </tr> <tr> <td></td> <td>MUNICIPAL LINE</td> <td></td> <td>WETLAND (PHOTO INTERPRETED)</td> </tr> <tr> <td></td> <td>WETLAND (PUBLIC)</td> <td></td> <td>WETLAND (DELINEATED)</td> </tr> <tr> <td></td> <td>WETLAND (PHOTO INTERPRETED)</td> <td></td> <td>STREAM (DELINEATED)</td> </tr> <tr> <td></td> <td>WETLAND (DELINEATED)</td> <td></td> <td>STREAM (PHOTO INTERPRETED)</td> </tr> <tr> <td></td> <td>STREAM (DELINEATED)</td> <td></td> <td>ACCESS ROAD</td> </tr> <tr> <td></td> <td>STREAM (PHOTO INTERPRETED)</td> <td></td> <td>FENCE LINE</td> </tr> </table>			PA HG3 400.00		LINE LIST NUMBER		PROPERTY LINE		WETLAND (PUBLIC)		MUNICIPAL LINE		WETLAND (PHOTO INTERPRETED)		WETLAND (PUBLIC)		WETLAND (DELINEATED)		WETLAND (PHOTO INTERPRETED)		STREAM (DELINEATED)		WETLAND (DELINEATED)		STREAM (PHOTO INTERPRETED)		STREAM (DELINEATED)		ACCESS ROAD		STREAM (PHOTO INTERPRETED)		FENCE LINE	<p>SCALE</p> <p>200 100 0 200 400</p> <p>IMAGERY: APRIL/MAY 2015</p>				
	PA HG3 400.00		LINE LIST NUMBER																																			
	PROPERTY LINE		WETLAND (PUBLIC)																																			
	MUNICIPAL LINE		WETLAND (PHOTO INTERPRETED)																																			
	WETLAND (PUBLIC)		WETLAND (DELINEATED)																																			
	WETLAND (PHOTO INTERPRETED)		STREAM (DELINEATED)																																			
	WETLAND (DELINEATED)		STREAM (PHOTO INTERPRETED)																																			
	STREAM (DELINEATED)		ACCESS ROAD																																			
	STREAM (PHOTO INTERPRETED)		FENCE LINE																																			