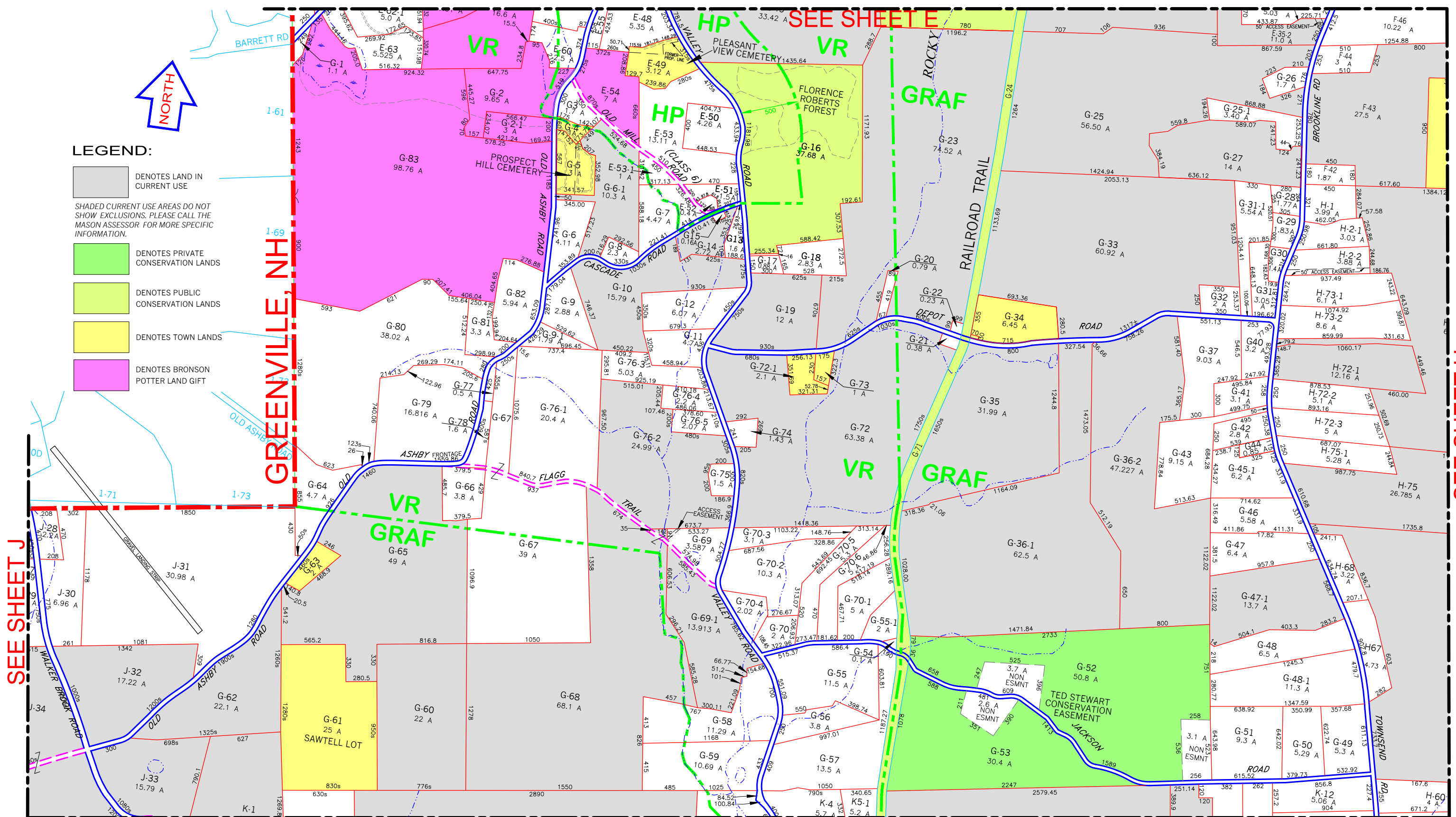




**LEGEND:**

- DENOTES LAND IN CURRENT USE
- SHADED CURRENT USE AREAS DO NOT SHOW EXCLUSIONS. PLEASE CALL THE MASON ASSESSOR FOR MORE SPECIFIC INFORMATION.
- DENOTES PRIVATE CONSERVATION LANDS
- DENOTES PUBLIC CONSERVATION LANDS
- DENOTES TOWN LANDS
- DENOTES BRONSON POTTER LAND GIFT



SEE SHEET J

SEE SHEET H

SEE SHEET K



THE INFORMATION SHOWN HEREON WAS PREPARED BY BOB LAROCHELLE FROM VARIOUS PLANS, AND AERIAL PHOTOGRAPHS PROVIDED TO THE TOWN OF MASON. THE TOWN AND PREPARER ASSUME NO RESPONSIBILITY FOR THE ACCURACY OR COMPLETENESS OF THIS INFORMATION. DO NOT USE FOR DEED DESCRIPTIONS.

**TAX MAP G**  
MASON, NEW HAMPSHIRE  
SCALE: 1"=800'      SEPT. 2014