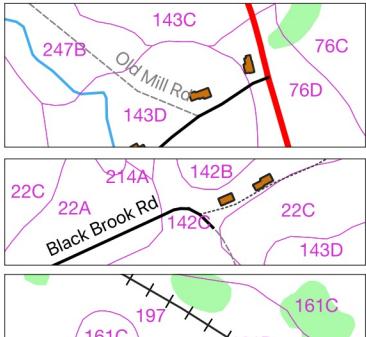


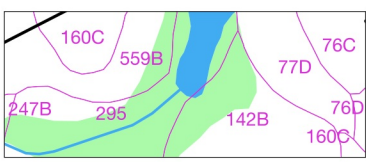
Town of Mason, New Hampshire

Soils Map

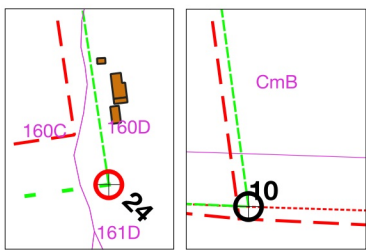
LEGEND:



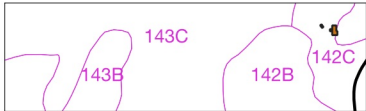
Transport
Red lines: State Higways
Black lines:
solid Town roads, maintained
--- Town roads, not maintained (Class VI)
..... Private roads or trails (gray)
Mason RR Trail



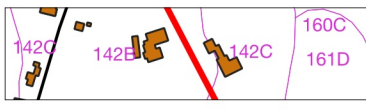
Hydrological
Blue line: stream
Blue area: pond
Green area: wetland



Town Boundaries:
Red dashed: Town/State line per USGS topos
Red dotted: State line per MA boundary data
Circles with cross-hairs: GPSed locations of town line monuments
Green dashed line: straight lines between above GPSed monuments



Soils types
Magenta outlines + soil type code



Structures
building footprints



Power line easements

NOTES:

Soil types and maps are from the 1985 "Soil Survey of Hillsborough County New Hampshire, Western Part", a publication of the National Cooperative Soil Survey with leadership by the USDA Soil Conservation Service. Digitized maps are from GRANIT. The full publication, "hillsborough_west.pdf", which contains soil descriptions and ratings can be downloaded from <https://www.nrcs.usda.gov/Internet/FSE_MANUSCRIPTS/new_hampshire/NH602/0/hillsborough_west.pdf>

NH Town boundaries, roads, RR, streams, wetlands, etc., are from GRANIT shape files (www.GRANIT.unh.edu) which are largely based on the USGS 7.5' topographic map data. Massachusetts boundaries, roads and streams are from MassGIS (www.mass.gov/service-details/massgis-data-layers) shape files. Digitized maps are from GRANIT.

Building footprints are from the Nashua Regional Planning Commission (NRPC) <http://www.nashuarpc.org/>, updated 2019-09-19.

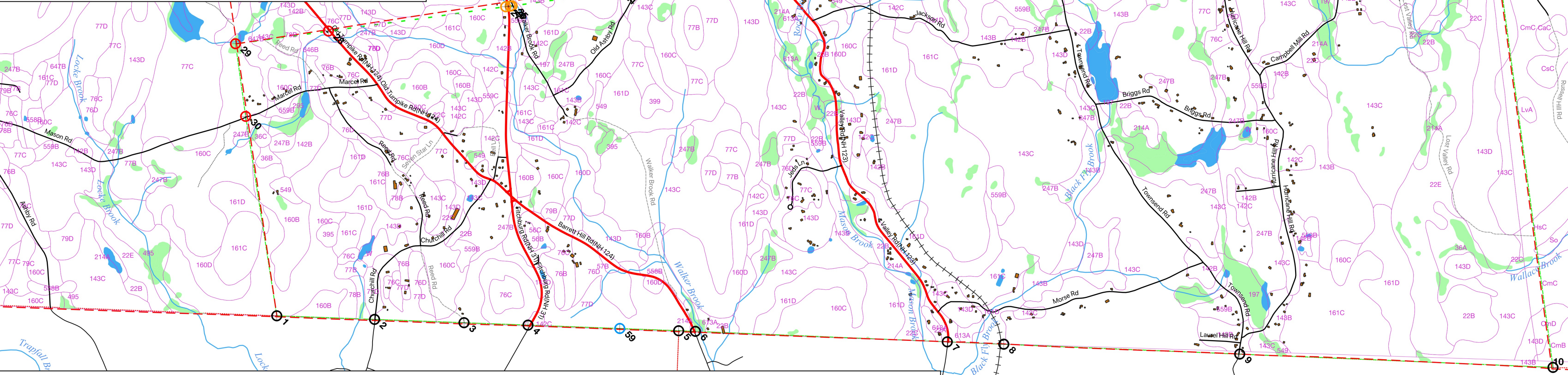
Granite "monuments" along Mason's town lines were located via GPS using an iGage iG3s dual frequency dual constellation GNSS receiver to record at least 30 minutes of data (longer in areas of heavy foliage). Data was post-processed by CSRS-PPP, whose analysis reports 95% probability of being within ± 3 feet. Note the differences between the USGS topo map locations and GPS readings, in some cases greater than 200 feet.

Monuments are numbered 1..30, in CCW direction starting at SW corner. Monuments from 1894 along NH/MA line are shown in black; town line monuments in red; NH DOT Highway monuments in orange; survey monuments thought to lie on town line in green. Two monuments in blue: #15 is centerline of a stone wall which is thought to be on the town line; #59 is an IP in a stone circle near where the USGS topos indicate a 1894 state line monument should have been placed, but none exists.

The State-line and Town-line GPS locations were connected with straight dashed green lines to indicate probable town lines.



Prepared for the Mason Conservation Commission by Garth Fletcher
release: 2021-08-31



Mason, NH, soils map